

8 7 6 5 4 3 2 1

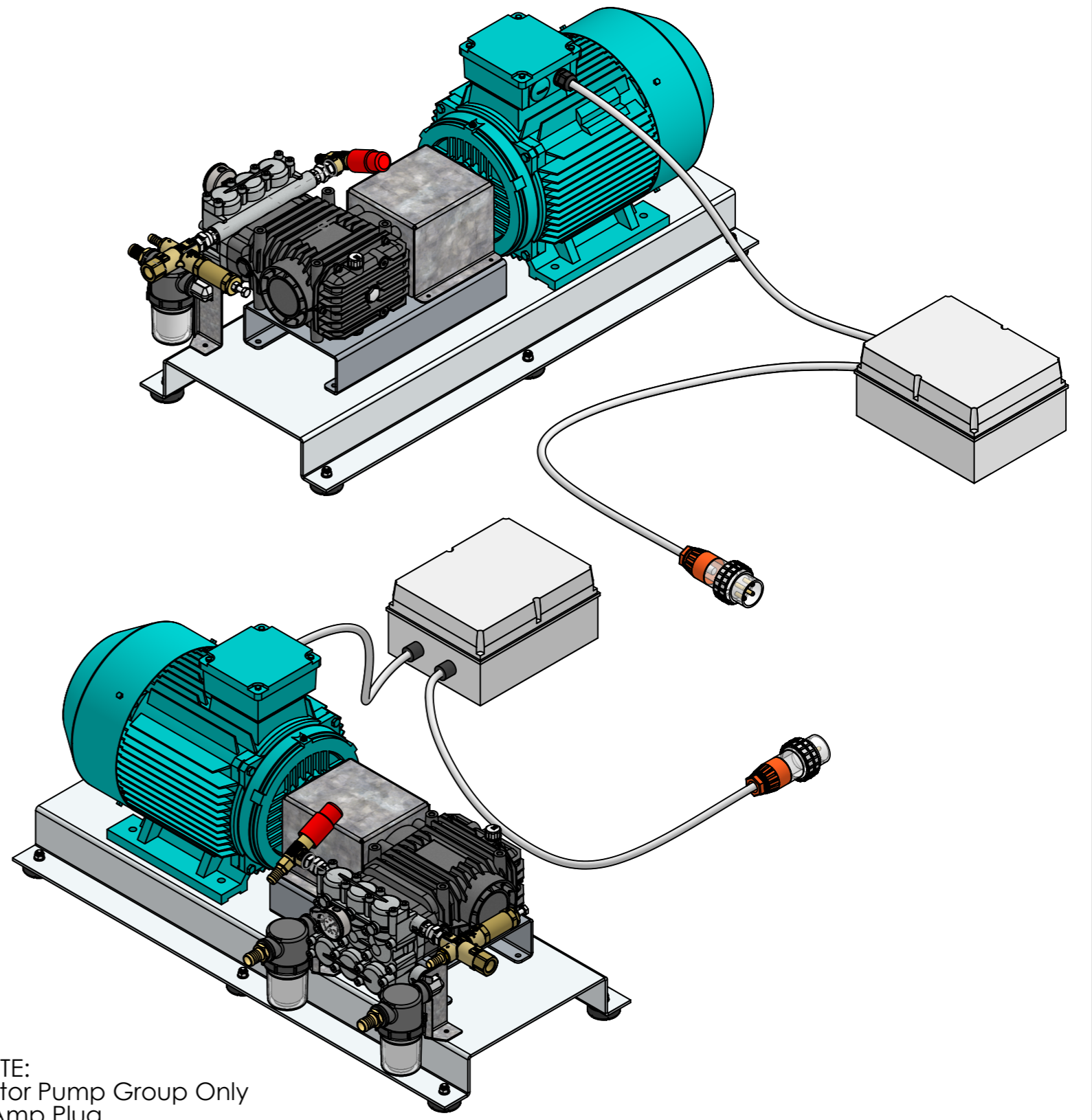
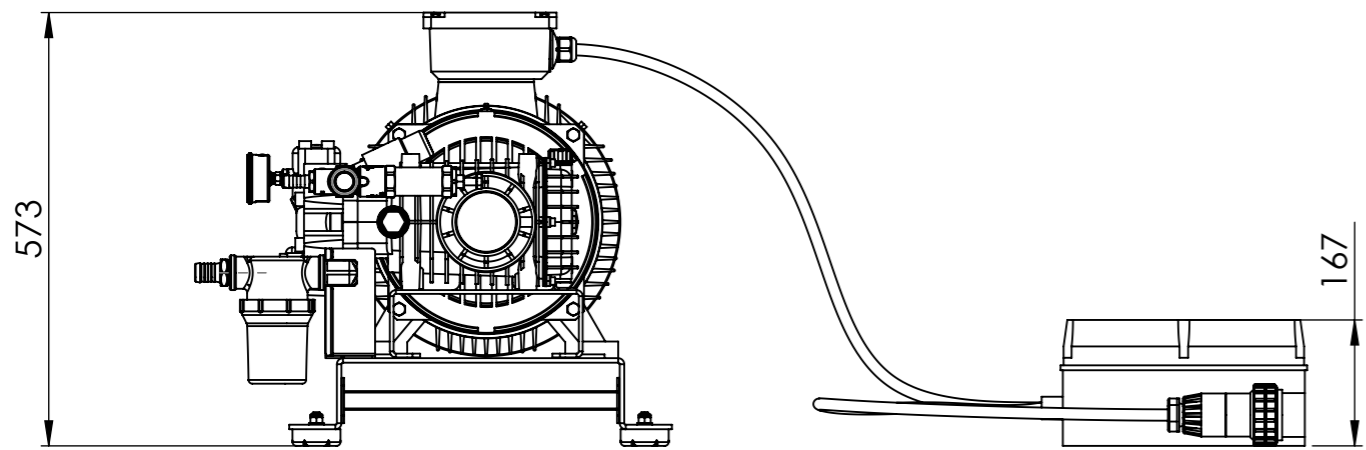
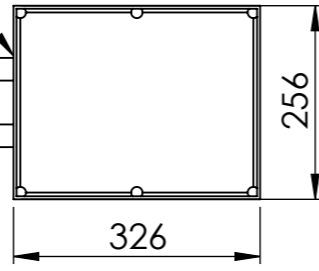
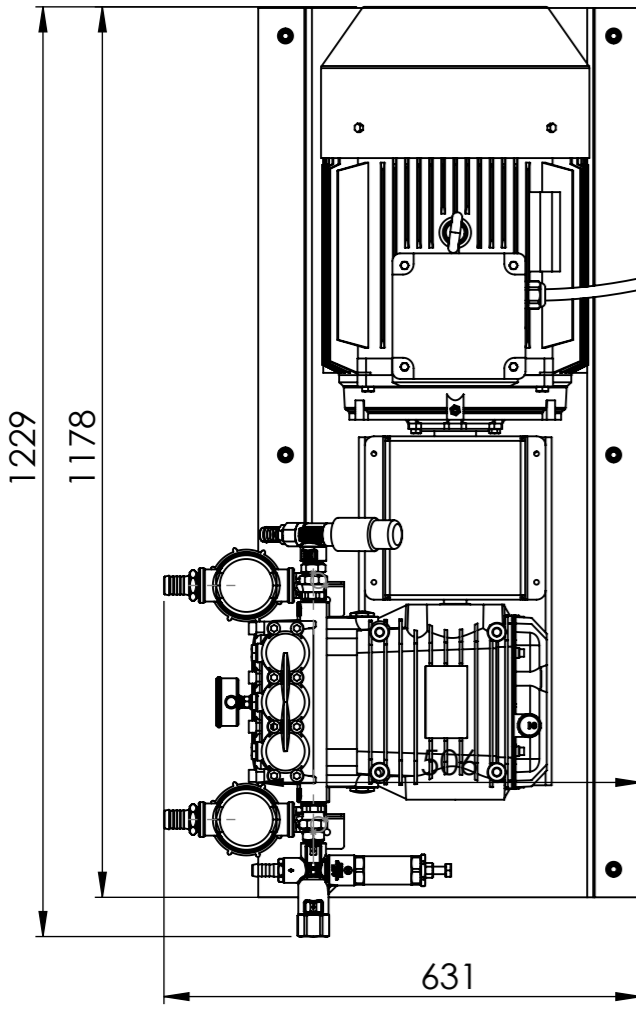
F  
E  
D  
C  
B  
A

F  
E  
D  
C  
B  
A


Cable position out of box can be changed

4m of cable

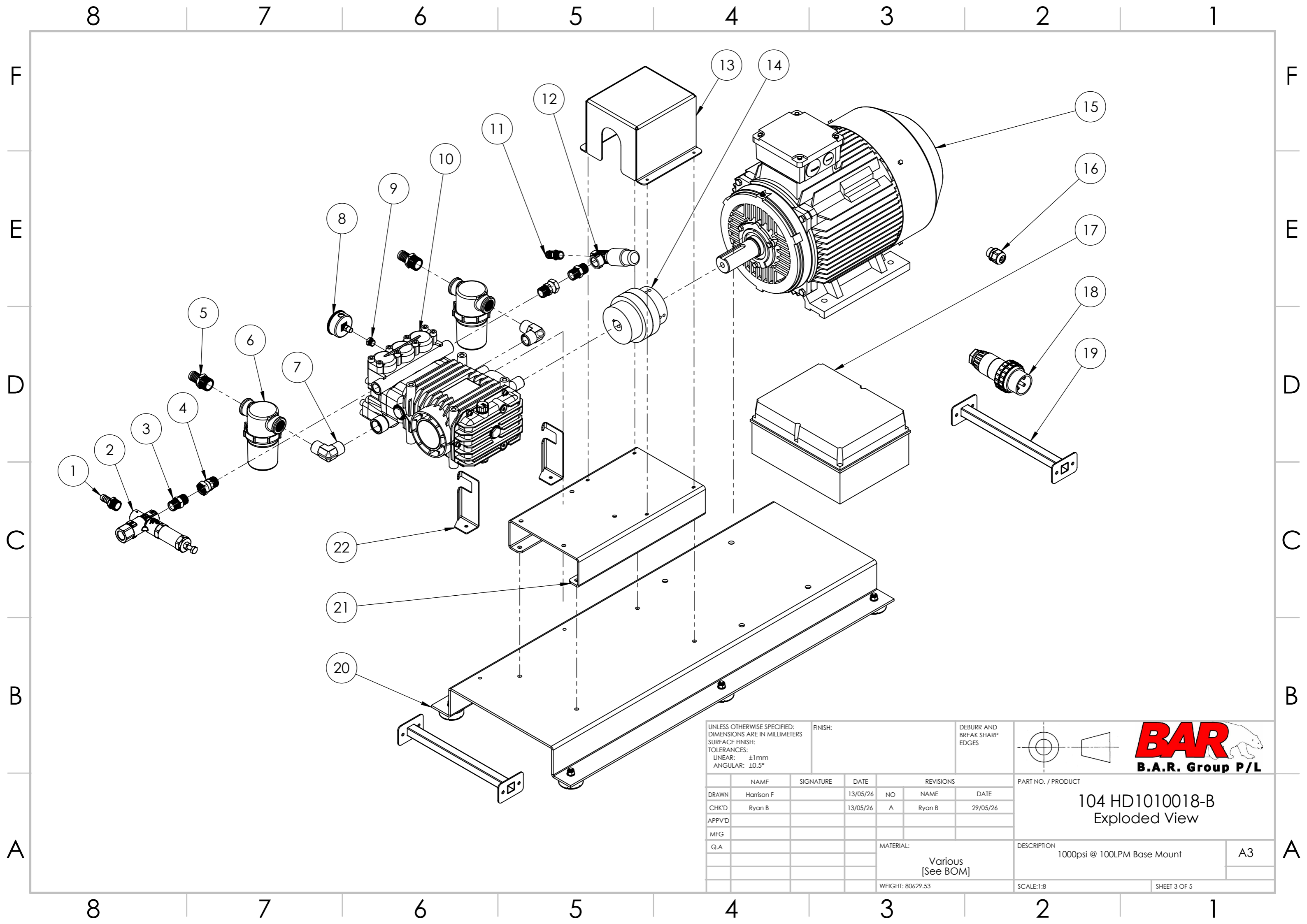
3m of Cable



NOTE:  
Motor Pump Group Only  
32Amp Plug

UNLESS OTHERWISE SPECIFIED: DIMENSIONS ARE IN MILLIMETERS SURFACE FINISH: TOLERANCES: LINEAR: ±1mm ANGULAR: ±0.5°			FINISH:			DEBURR AND BREAK SHARP EDGES			 <b>B.A.R. Group P/L</b>	
DRAWN Harrison F			SIGNATURE			DATE 13/05/26			PART NO. / PRODUCT	
CHK'D Ryan B			DATE 13/05/26			A			104 HD1010018-B	
APPVD			REVISIONS			NAME DATE			General Arrangement Drawing	
MFG			MATERIAL:			Various			DESCRIPTION	
Q.A			[See BOM]			WEIGHT: 80629.53			1000psi @ 100LPM Base Mount	
			SCALE: 1:10			SHEET 1 OF 5			A3	

8 7 6 5 4 3 2 1



UNLESS OTHERWISE SPECIFIED:  
 DIMENSIONS ARE IN MILLIMETERS  
 SURFACE FINISH:  
 TOLERANCES:  
 LINEAR:  $\pm 1\text{mm}$   
 ANGULAR:  $\pm 0.5^\circ$

FINISH:

DEBURR AND  
 BREAK SHARP  
 EDGES



	NAME	SIGNATURE	DATE	REVISIONS		
				NO	NAME	DATE
DRAWN	Harrison F		13/05/26			
CHK'D	Ryan B		13/05/26	A	Ryan B	29/05/26
APPVD						
MFG						
Q.A						
			MATERIAL:			
			Various			
			[See BOM]			
			WEIGHT: 80629.53			

PART NO. / PRODUCT		DESCRIPTION	A3
104 HD1010018-B Exploded View			
SCALE: 1:8		SHEET 3 OF 5	

8 7 6 5 4 3 2 1

ITEM NO.	PART NUMBER	DESCRIPTION	QTY.
1	165 P31212 <span style="color:red">△A</span>	M 3/4 x 3/4 Tail barb	1
2	145 60.4800.00	Unloader VB140/160 (D1)	1
3	165 S27-1212	NIPPLE 3/4BSPT x 3/4BSPT	2
4	165 S80-1212	3/4 BSPTM 3/4 BSPPF SWIVEL	2
5	165 P31616	1inch Barb - 1in thread	2
6	222 DF10050	Clear Bowl Filter 1 - 50 Mesh	2
7	147 24.0293	Elbow MM 1 inch	2
8	165 1615933	Gauge 6000 Psi Rear S/S 1pc	1
9	148 575 30 <span style="color:red">△A</span>	Reduction Nipple 1/4-3/8 BSP	1
10	220 CLW100 100 LEFT	CL Series 1450psi 100L/min (A01)	1
11	165 P31208	F Hose Barb 3/4 x 1/2BspM	1
12	145 60.5115.00	SAFTEY VALVE tamper proof	1
13	125 85.804.530	Shaft Guard Box	1
14	165 HRC130 JAW COUPLING	Flex cpling B&K 30&48mm shafts	1
15	165 104 0018D4T	18.5kw 4pole foot mount IP66 Teco electric motor	1
16	165 Cable Gland 25mm	Cable gland Nylon 25mm	1
17	165 Switch Kit 18KW	18kw star/delta with run time and hour meter and remote start stop	1
18	165 P4P32ASP TWM	Plug 4 Pin-3 Phase-32amp (A36)	1
19	125 85.804.528	AL Base Plate Support Brace	2
20	125 85.600.085B	125 85.600.085B	1
21	125 85.804.529	Pump Platform for 104 HD1010018-B	1
22	125 85.804.533	1" Elbow Support	2

F

F

E

E

D

D

C

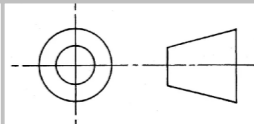

C

B

B

A

A

UNLESS OTHERWISE SPECIFIED: DIMENSIONS ARE IN MILLIMETERS SURFACE FINISH: TOLERANCES: LINEAR: ±1mm ANGULAR: ±0.5°			FINISH:			DEBURR AND BREAK SHARP EDGES			 		
									PART NO. / PRODUCT		
DRAWN Harrison F			SIGNATURE			DATE 13/05/26			NO NAME DATE		
CHK'D Ryan B						13/05/26			A Ryan B 29/05/26		
APPVD											
MFG											
Q.A									DESCRIPTION		
									1000psi @ 100LPM Base Mount		
									A3		
									SCALE:1:5		
									SHEET 4 OF 5		

8 7 6 5 4 3 2 1