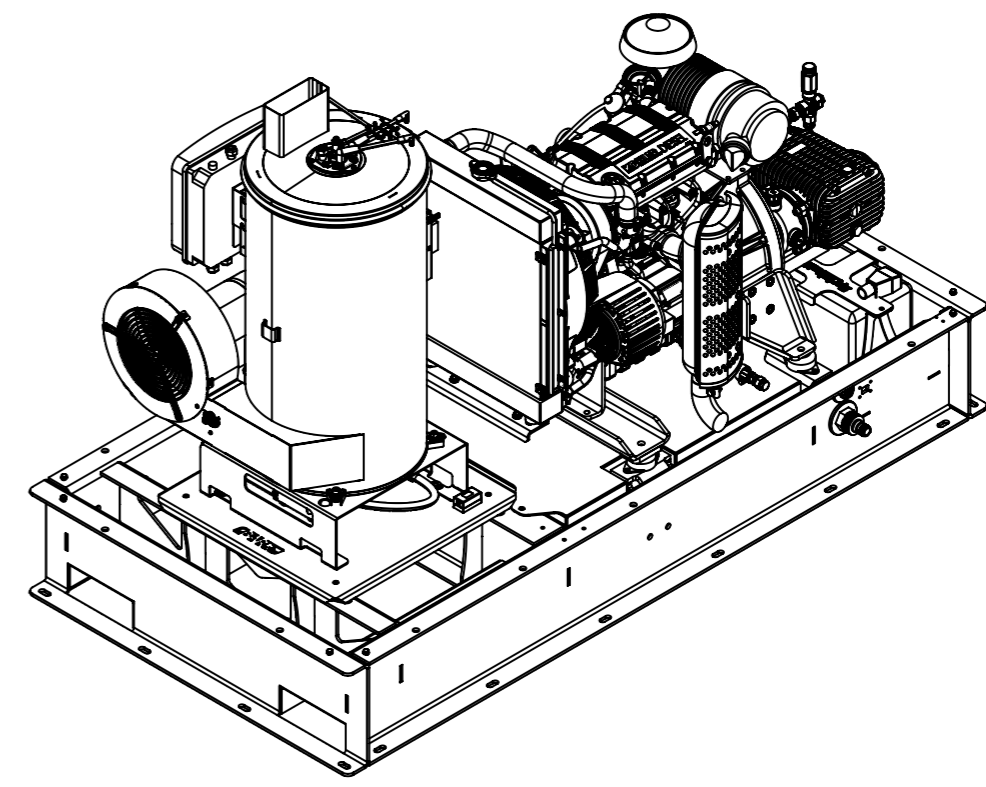
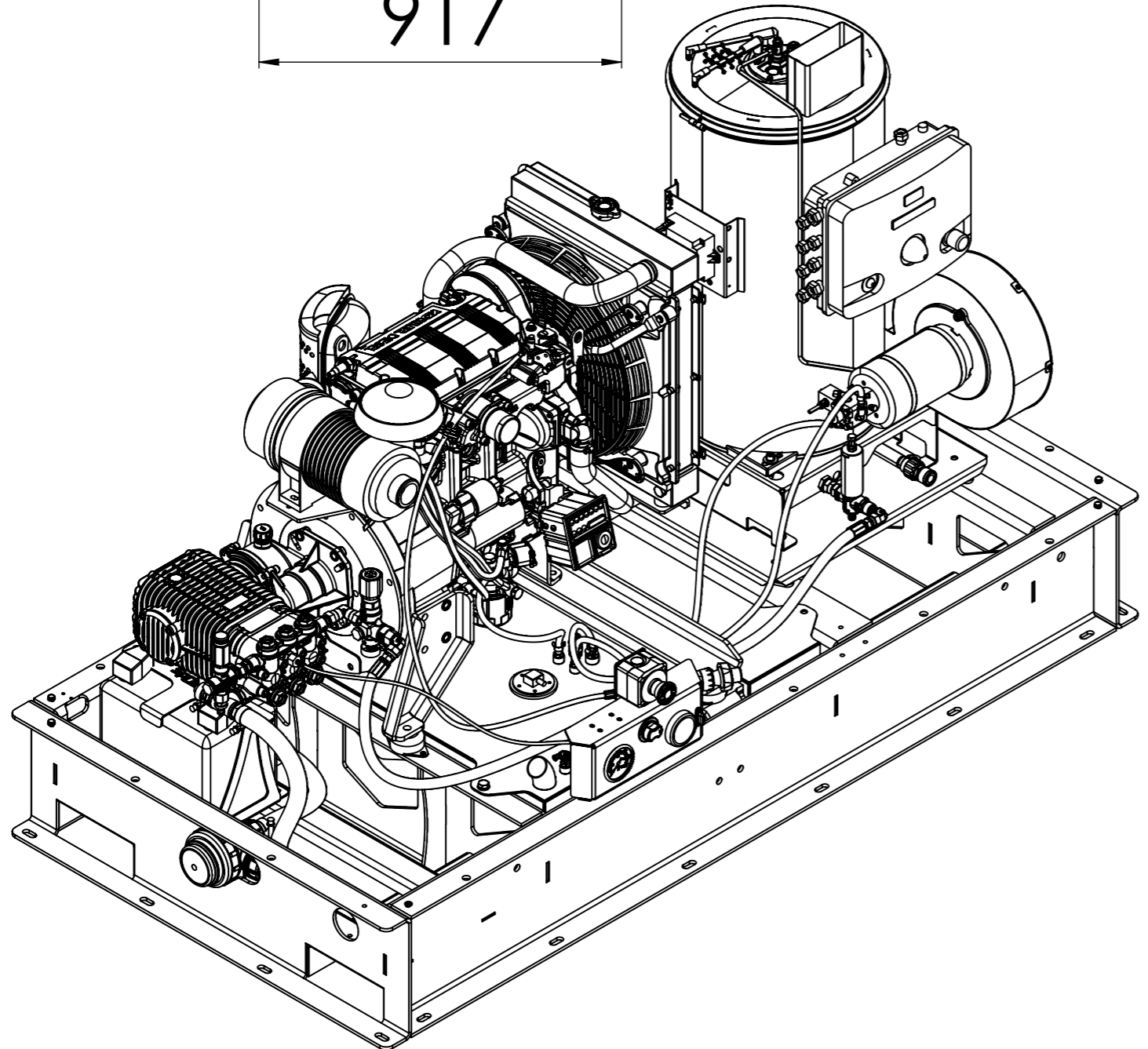
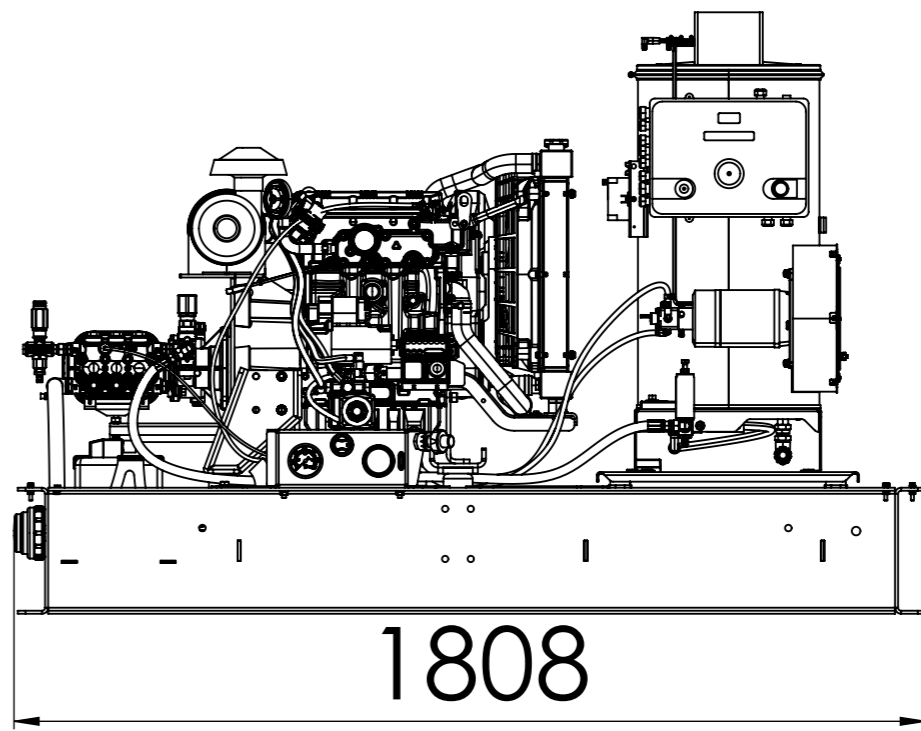
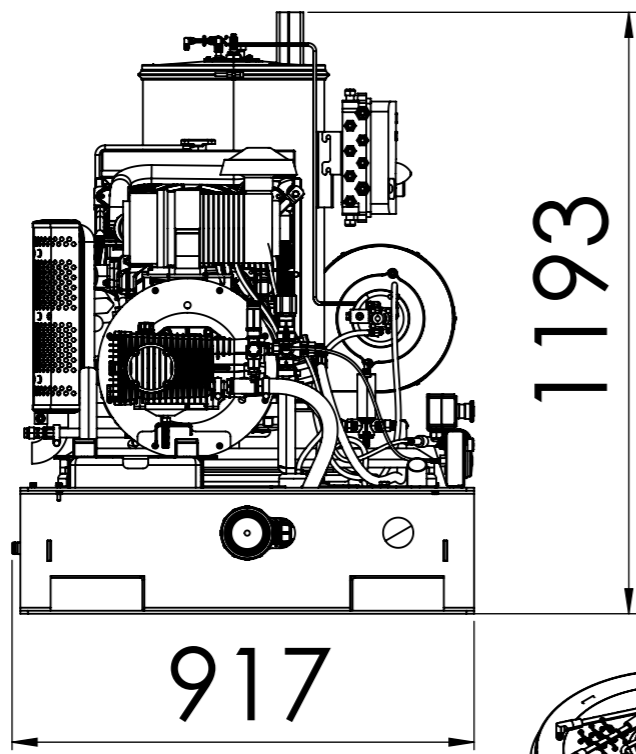



8 7 6 5 4 3 2 1

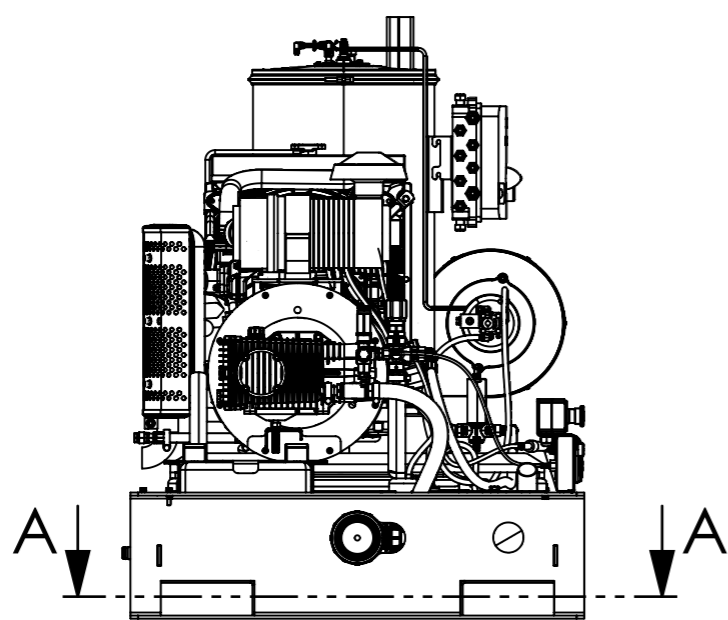
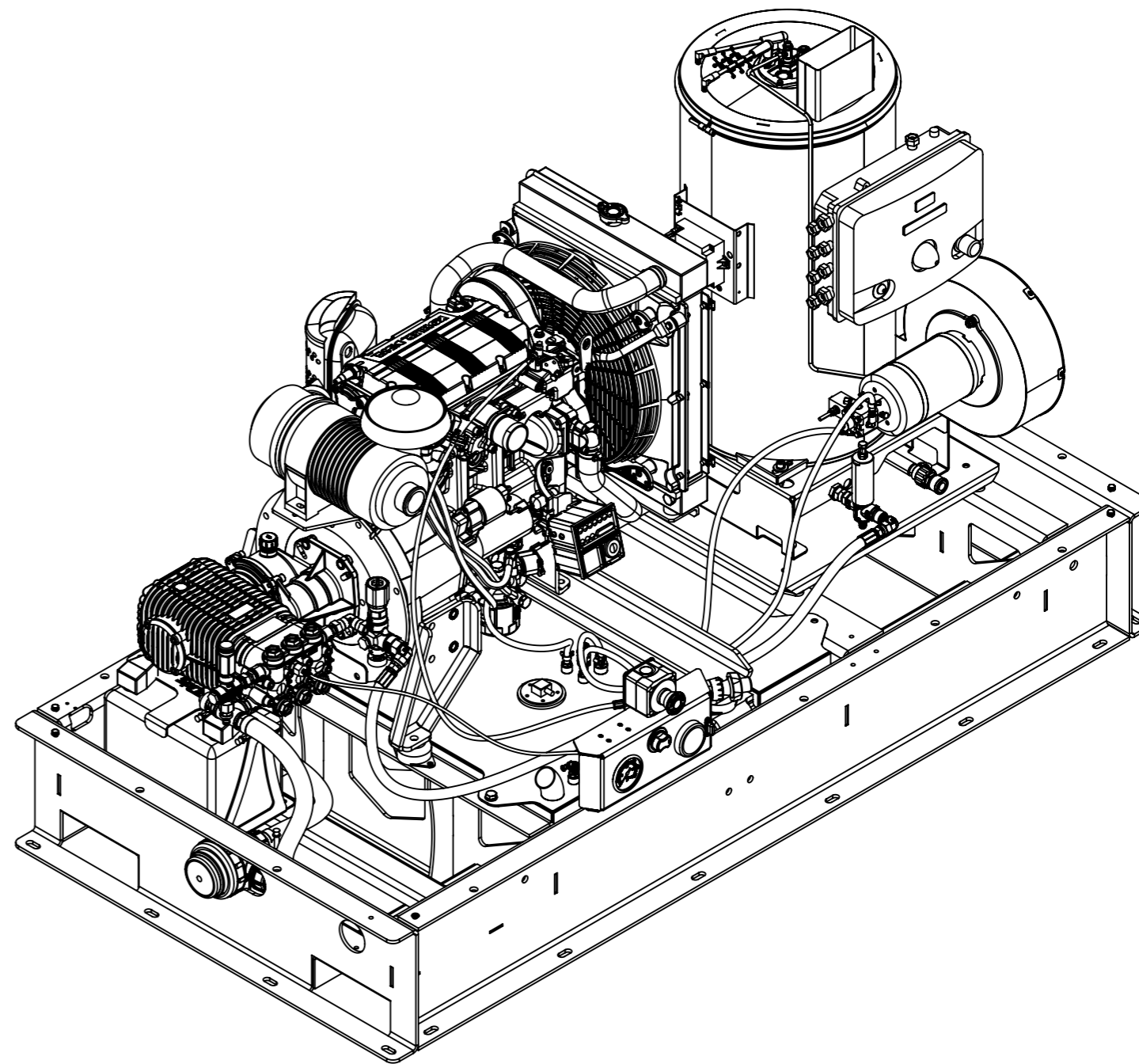
F
E
D
C
B
A


F
E
D
C
B
A

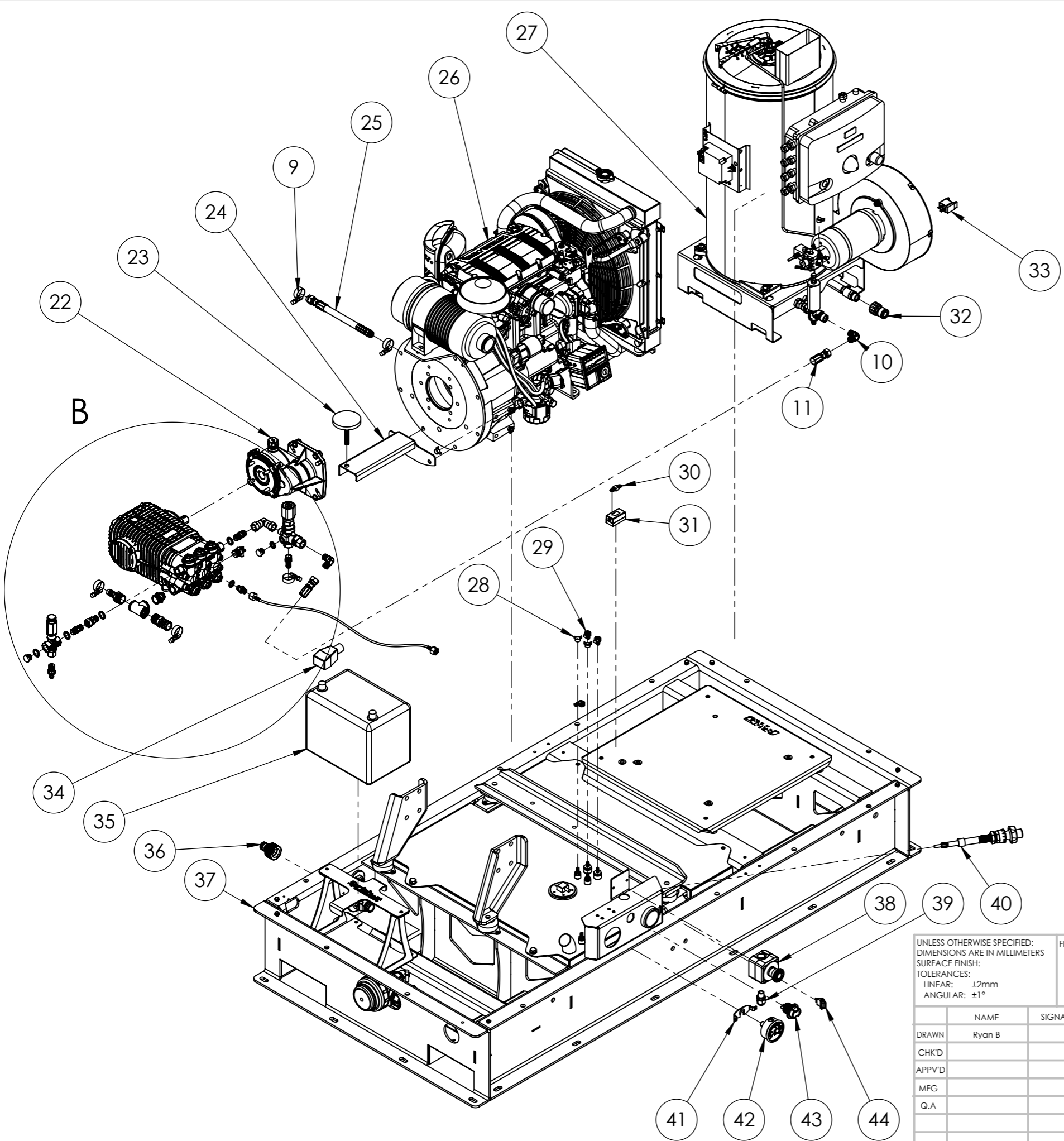



UNLESS OTHERWISE SPECIFIED: DIMENSIONS ARE IN MILLIMETERS SURFACE FINISH: TOLERANCES: LINEAR: ±2mm ANGULAR: ±1°			FINISH: Various			DEBURR AND BREAK SHARP EDGES				
DRAWN		NAME	SIGNATURE	DATE	REVISIONS		PART NO. / PRODUCT			
CHK'D		Ryan B		24/04/26	NO		122 HOT4027CG-KE Skid General Arrangement Drawing			
APPVD										
MFG										
Q.A							MATERIAL: Various		DESCRIPTION Hot Water - Diesel - Elite Skid (M01)	A3
							WEIGHT: 145672.60 g		SCALE: 1:15	SHEET 1 OF 5

8 7 6 5 4 3 2 1



UNLESS OTHERWISE SPECIFIED: DIMENSIONS ARE IN MILLIMETERS SURFACE FINISH: TOLERANCES: LINEAR: ±2mm ANGULAR: ±1°			FINISH: Various		DEBURR AND BREAK SHARP EDGES		 B.A.R. Group P/L	
			NAME		SIGNATURE		DATE	
DRAWN			Ryan B				24/04/26	
CHK'D							NO	
APPVD							NAME	
MFG							DATE	
Q.A							REVISIONS	
							PART NO. / PRODUCT	
							122 HOT4027CG-KE Skid Mounting Holes	
							DESCRIPTION	
							Hot Water - Diesel - Elite Skid (M01)	
							A3	
							SCALE: 1:15	
							SHEET 2 OF 5	
							WEIGHT: 145672.60 g	



UNLESS OTHERWISE SPECIFIED: DIMENSIONS ARE IN MILLIMETERS SURFACE FINISH: TOLERANCES: LINEAR: ±2mm ANGULAR: ±1°				FINISH: Various		DEBURR AND BREAK SHARP EDGES		 B.A.R. Group P/L	
				PART NO. / PRODUCT		122 HOT4027CG-KE Skid Exploded View			
DRAWN Ryan B				SIGNATURE		DATE 24/04/26		REVISIONS	
CHK'D						NO		NAME	
APPVD								DATE	
MFG									
Q.A						MATERIAL:		DESCRIPTION	
						Various		Hot Water - Diesel - Elite Skid (M01)	
						WEIGHT: 145672.60 g		SCALE: 1:12	
								SHEET 3 OF 5	

8 7 6 5 4 3 2 1

F F

E E

D D

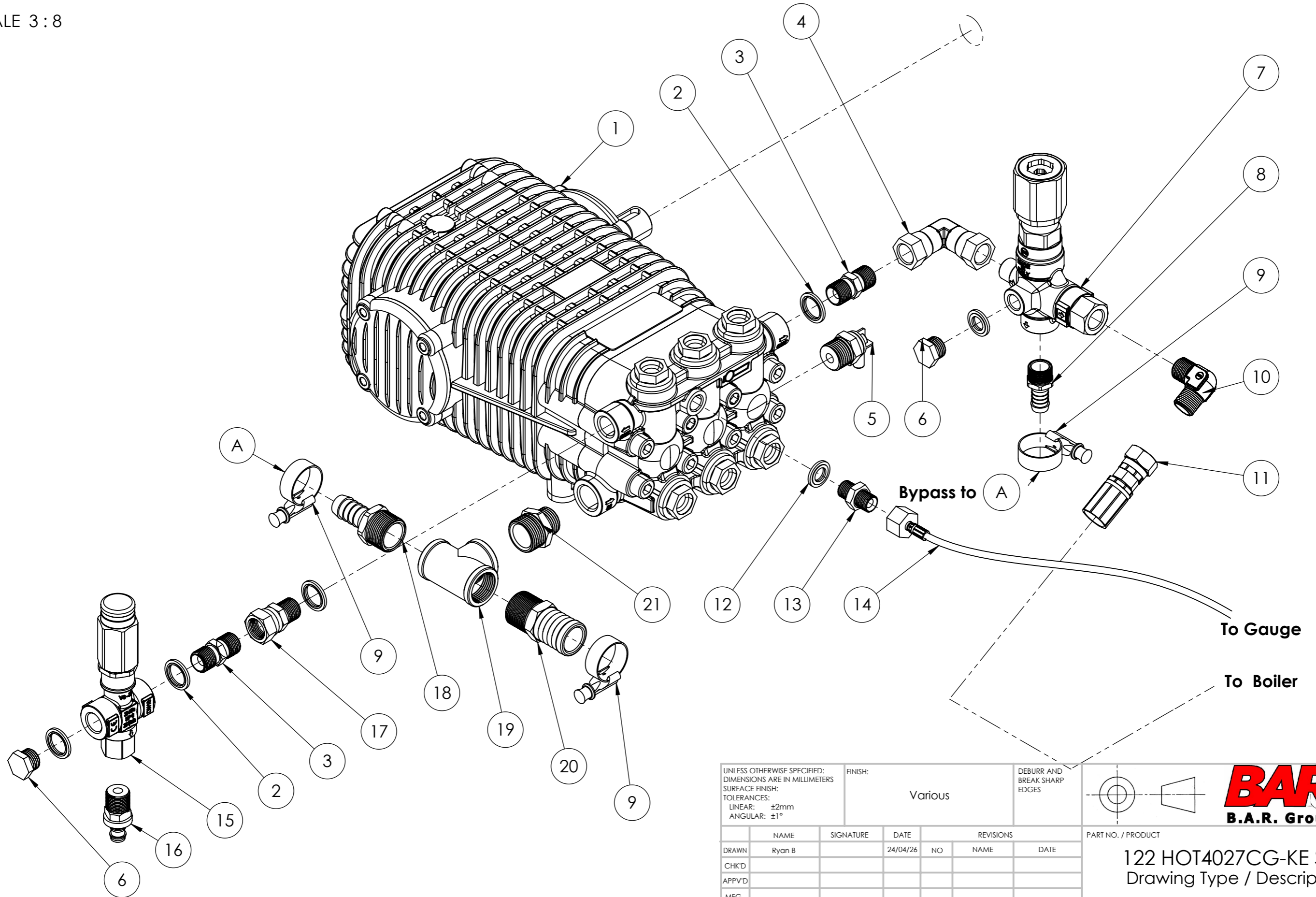
C C


B B

A A

8 7 6 5 4 3 2 1

DETAIL B
SCALE 3:8

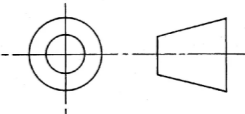



UNLESS OTHERWISE SPECIFIED: DIMENSIONS ARE IN MILLIMETERS SURFACE FINISH: TOLERANCES: LINEAR: ±2mm ANGULAR: ±1°				FINISH: Various		DEBURR AND BREAK SHARP EDGES		 B.A.R. Group P/L	
DRAWN Ryan B		SIGNATURE		DATE 24/04/26		NO			
CHK'D		APPVD		MFG		Q.A		PART NO. / PRODUCT 122 HOT4027CG-KE Skid Drawing Type / Description	
				MATERIAL: Various		DESCRIPTION Hot Water - Diesel - Elite Skid (M01)		A3	
				WEIGHT: 145672.60 g		SCALE: 1:15		SHEET 4 OF 5	

8 7 6 5 4 3 2 1

BOM Table

ITEM NO.	PART NUMBER	DESCRIPTION	QTY.
1	210 SW5539S	24mm Shaft	1
2	147 0030080005	3/8 Dowty Seal Washer	4
3	148 570 79	Nipple 3/8M-M	2
4	165 R1AO519051-0606	A Union 90 Deg 3/8 FF	1
5	145 60.0630.70	Thermal dump valve 1/2M	1
6	125 85.601.015 30L-036	3/8 BSPP Bung for 125 85.601.015-029	2
7	145 60.1800.00	Unloader VB350 (D01/NBD)	1
8	165 P30808	165 P30808B Hose barb 1/2 x 1/2	1
9	165 00979462	B Hose Clamp 16-24mm s/s	8
10	145 12.2006.00	Elbow 3/8M-M	2
11	hose connection (18.5mm)		2
12	147 0030080004	Dowdy Seal for 125 85.601.015-029	2
13	147 1200020311	Nipple 1/4" BSPP M to 1/4" BSPP M	1
14	148 495 252 070 0	Gauge Line 700mm	1
15	145 60.0580.00	Safety Valve VS350 (D25)	1
16	125 85.804.024	Barb bypass	1
17	165 46-S1B2B30606	F Sw. 3/8FS & 3/8MF SS (C01)	1
18	165 P30812	F P3 1/2 x 3/4 M Hose Barb	1
19	165 03P35-12	TEE 3/4" FFF	1
20	165 P31612	1 inch barb - 3/4M thread	1
21	165 03307904	Nipple 3/4M-1/2M	1
22	145 50.0071.00	Gear Box B31 (C5/500) B31 1 1/8 24mm	1
23	165 2004 LVR801250S	A Justa foot M12 x 50 mm	1
24	000 Pump Arm3		1
25	165 5477	Oil drain hose M18 x1.5	1
26	166 KDW1003-3C1312	Kohler 27Hp engine (A01)	1
27	109 3.026.02.106P	BA 350 @ 25 C2 12V/12V + Panel (A3)	1
28	165 HSC13	O Clip 12-14 mm	4
29	165 04159708	B Hose clamp s/s 10-16 mm	3
30	165 SF2032	50A Red MIDI Fuse	1
31	165 MS6320	Victron Fuse holder for MIDI-fuse	1
32	125 85.301.203	Coupler QC to M22 3/8	1
33	165 68060	Relay 30A fused	1
34	125 85.804.518	Battery Cover Large - Red & Black Iso	1
35	165 BATTERY 85D23R	Battery 550CCA (C01)	1
36	165 950-5404	T Hose F 19mm Tap Plug	1
37	125 85.804.488	Sprintjett Elite Skid	1
38	125 85.804.054	NC E Stop w/ ring label 68*68*55	1
39	165 cable gland 16mm	Cable gland Nylon 16mm	1
40	165 ZSECABLE2.0M		1
41	148 548 50	Gauge Bracket 63mm	1
42	148 548 40	Gauge 63mm 6000psi back entry	1
43	165 61036BL	Battery Master Switch	1
44	165 SZ2046	Fuse Holder Panel mount	1

UNLESS OTHERWISE SPECIFIED: DIMENSIONS ARE IN MILLIMETERS SURFACE FINISH: TOLERANCES: LINEAR: ±2mm ANGULAR: ±1°		FINISH: Various		DEBURR AND BREAK SHARP EDGES		 	
DRAWN Ryan B		SIGNATURE		DATE 24/04/26		PART NO. / PRODUCT 122 HOT4027CG-KE Skid Bill of Materials	
CHK'D				NO		REVISIONS NAME DATE	
APPVD							
MFG							
Q.A				MATERIAL: Various		DESCRIPTION Hot Water - Diesel - Elite Skid (M01) A3	
				WEIGHT: 145672.60 g		SCALE:1:15 SHEET 5 OF 5	

8 7 6 5 4 3 2 1