

BE

POWER EQUIPMENT

MISTING FAN OWNER'S MANUAL


Model: IMF66




SAVE THESE INSTRUCTIONS FOR FUTURE REFERENCE







SAFETY GUIDE

1. Please read the user guide carefully before using the mist fan.
2. Prepare the installation tools follow the user manual before installation.

	WARNING If you ignore the warning content, may cause harm to the body
---	--

	NOTE If you ignore the note content, may cause damage to the body and equipment
---	--

LOGO INTRODUCTION

	NOTE
	PLUG
	FORBIDDEN
	NO DISASSEMBLY
	NOTE WATERPROOF
	NOTE FIRE

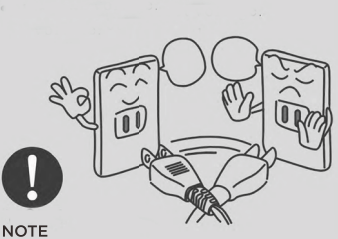
WARNING

• Don't use the mist fan facing household appliances directly.



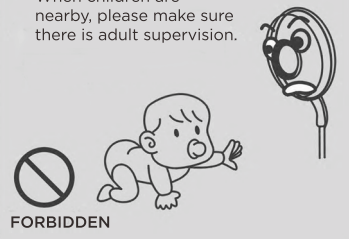
FORBIDDEN

• Please use the correct voltage.



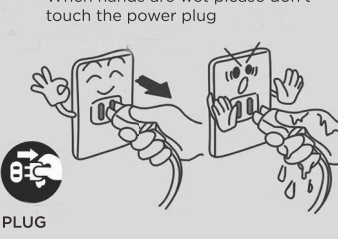
NOTE

• When children are nearby, please make sure there is adult supervision.



FORBIDDEN

• When hands are wet please don't touch the power plug



PLUG

REPAIR RECORD

Repair Company:	Repair Date:
Repairer:	User Confirm:
Repair Items:	

REPAIR RECORD

Repair Company:	Repair Date:
Repairer:	User Confirm:
Repair Items:	

REPAIR RECORD

Repair Company:	Repair Date:
Repairer:	User Confirm:
Repair Items:	

REPAIR RECORD

Repair Company:	Repair Date:
Repairer:	User Confirm:
Repair Items:	

WARRANTY TERMS:

1. This product is guaranteed for twelve months, the warranty applies to repair or replacement while mist fan is found to be defective in material or workmanship. This warranty does not apply to any damage resulting from improper use, artificial damage and transportation damage as a result of other factors will not be included in the warranty. You should read the instruction manual before operating it.
2. Warranty clauses are base on the date of purchase, when you apply to repair the mist fan, you should take the mist fan with the original invoice of this mist fan together, this warranty only authorized to the original purchaser of this mist fan, any implied warranty of merchantability or fitness for a particular purpose on this mist fan is limited in duration to the d11ration of the warranty,

Certification

Model No.: _____

Production Date: _____

Checked: _____

Check Date: _____

Customer Information

User Name: _____ Agent: _____

Purchase Date: _____ invoice No.: _____

User Add.: _____

User Tel.: _____

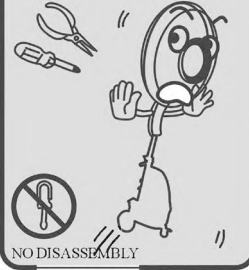
(Customer Fill)

NOTES

- When a burning smell or smoke plug, please stop the mist fan.



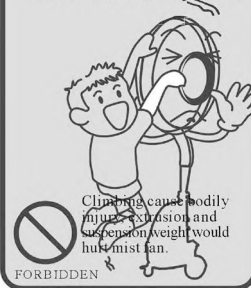
- Non-professionals may not carry out repairs and modifications mist fan



- During thunderstorms & rain, please stop using mist fan and move it to a safe place.



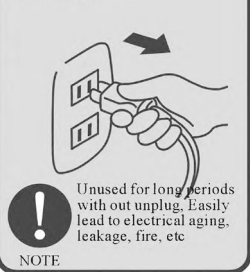
- Don't climb, squeeze, and hang heavy objects on fan.



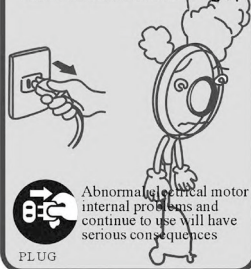
- When the fan is working, please don't touch the fan guard.



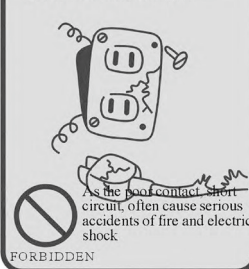
- Please pull plug out from the outlet while mist fan is't used



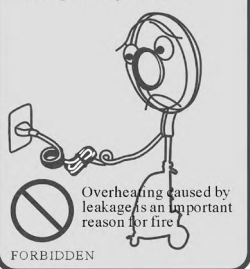
- Please pull plug out from the outlet when inspect electrical smell or smoke from motor



- Please check the power outlet, plug, wire are intact before use of mist fan



- Please do not use wiring together, must be completely untied.



Thank you for purchasing a BE water mist fan. Fans series include of IMF66-01 IMF66-02 and IMF66-03, please read this manual carefully before using fan series

GENERAL NOTE:

The mist fans include oscillating fan head, adjustable speeds control, adjustable mist volume control. This system will provide very comfortable water spray to clear the atmosphere: the surrounding air will be comfortable with clean, fresh and cool.

APPLICATION:

1. Cooling: Outdoor restaurants, recreational places, bus stations, railway stations, waiting areas, hotels, also for work areas, loading docks, zoos, etc,
2. Suppressing dust: Removing atmosphere dust, recycling, waste and refuse handling, farming, mining, pollution control, decrease unpleasant odor, etc.
3. Increasing humidity: Used in spinning mills, cotton warehouse, park, greenhouse, testing chambers, flour mills, etc.
4. Agriculture: Used in poultry farms, mushroom plants, riding arenas, birds and animals, ensures proper humidity levels and suitable conditions, improves the operations for all kinds of livestock industries.
5. Special effects of mist: Gardens, zoos, fairs, movies sets, water features, fountain, used for creative fog effects.

SAFETY INSTRUCTIONS:

1. As Instruction Manual described, the installation and operation must comply with local utility standards. Improper use of mist fan may cause fire, electric shock and injury.
2. Don't immerse this system, plug, or cord in water or spray with liquids, hail snow or any other inclement weather. If the cord is damaged in any way, don't operate mist fan system
3. Don't use if the plug or power cord is damaged in any way, don't place mist fan system near an open flame, cooking or heating appliance, open containers of flammable liquids or gases.
4. Don't hang heavy or sharp objects on the power cord, and don't touch hot surfaces.
5. Don't place any objects through the guards into the blades, also don't operate mist fan without guards in place.
6. The stand type mist fan must be grounded, don't hang or mount it on the wall or ceiling, and the wall type mist fan must be mount on the wall properly.
7. Close supervision is necessary when the mist fan is used near children.
8. Disconnect the mist fan from outlet socket when the mist fan isn't in use, when moving the system or before clearing the system, remove the plug from the electrical receptacle by pulling on the plug and never yank on power cord.
9. Never wash the system with a garden hose, water may harm motor or system, keep all connections dry and off the ground to reduce the risk of electric shock, don't touch the plug with wet hands.
10. Must use 3-prong grounded extension cord with mist fan, this plug is intended to fit fully in a grounded outlet only, if the plug does not fit fully into the outlet, contact a qualified electrician, don't attempt to defeat or disable this safety feature.
11. Make sure the system voltage and frequency are same as local electrical outlet voltage and frequently.
12. Don't use it when the system is damaged, please contact with our agent directly.

CARE AND STORAGE:

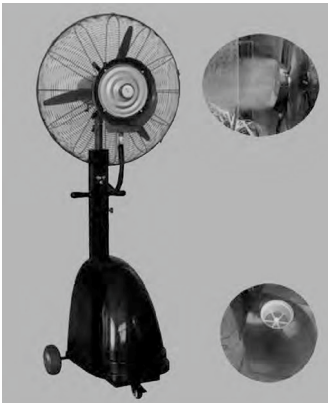
1. Ensure the plug is removed from the electrical outlet before attempting any clearing or maintenance.
2. Clean the water tank regularly with an antibacterial agent.
3. Only use soft moistened cloth to clean the mist fan; don't immerse the mist fan in water.
4. For storage: Clean mist fan carefully as instructed and cover with plastic cloth, store the mist fan in clear dry place.
5. Caution: If you find a problem with the fan, please don't open the fan motor housing as this may cause injury, damage to the fan will void your warranty.

SPECIFICATION OF MIST FAN



Fan diameter: 650mm (26 inches)
 Fan oscillation adjustable: 90 degrees automatically
 Fan tilt adjustable: 30 degrees
 Available area: 30-50m³
 Temperatures drop: 4 °C - 8 °C
 Operation Temperature: 10 °C- 60 °C
 Operation Humidity: 10% - 85%
 Working voltage: 110V- 120V FOR 110V
 190V-240V FOR 220V
 Water tank capacity: 41 liters
 Continuance water supply: 9 hours

Stand Fan Model	Fan Size (mm)	Freq Hz	Volt VAC	Input(watts)			Airflow(m ³ /h)			Noise (dBA)
				Low	Mid	High	Low	Mid	High	
IMF66-01	26"	50/60	220	165/ 150	192/ 170	230 215	7500/ 10000	10000, 12000	13000/ 14800	51/60
IMF66-02	26"	50/60	220	165/ 150	192/ 170	230 215	7500/ 10000	10000, 12000	13000/ 14800	51/60
IMF66-03	26"	50/60	220	165/ 150	192/ 170	230 215	7500/ 10000	10000, 12000	13000/ 14800	51/60



- Place mist fan on the level surface carefully.
- Make sure the pump inlet is opened.
- Fill clean water into the tank, minimum level should cover the water pump. Don't operate mist fan without enough water.
- Adjust misting volume to the appropriate position and plug low speed ensure the fan is operating properly.
- Start misting switch; ensure all components are operating properly.
- Adjust misting volume as needed; ensure the return water may return to tank.

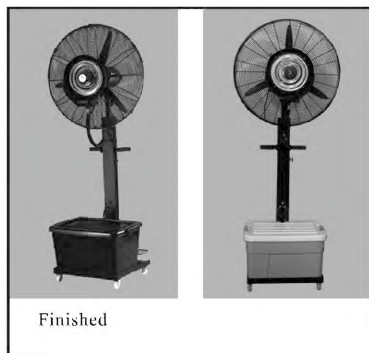
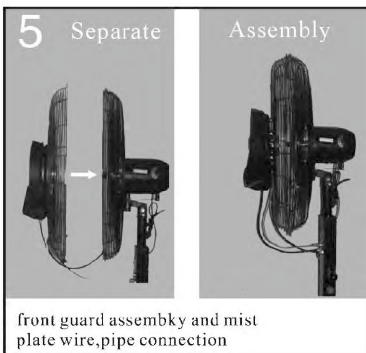
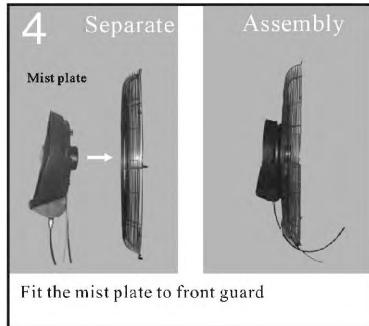
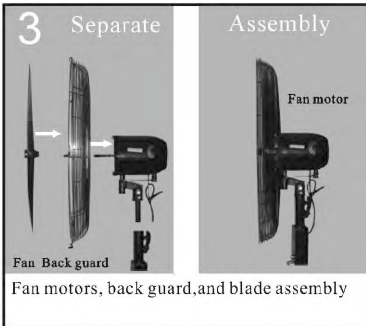
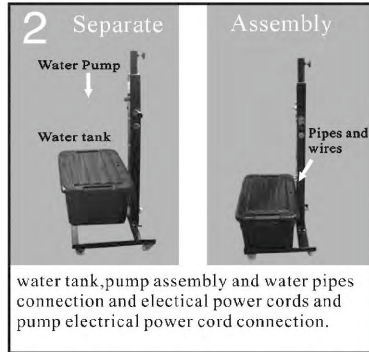
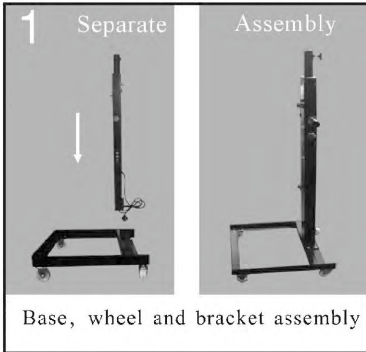
MODEL	PIN IMF66
Air Flow (m ³ /Min)	138
Misting Area (m2)	Up to 200
Tank Size	41L
Speeds	3-Speed
Motor (RPM)	1350
Water Consumption L/hr	4.55
Motor Style	Tropic Proofed Motor

HIGH PRESSURE MIST FAN SERIES

IMF66-01



ASSEMBLY OF MIST FAN



Distributed in Australia by



CONTACT DETAILS

B.A.R Group P/L
15 Hudson Place,
Mulgrave, NSW, Australia 2756
Phone: 02 4577 2144
www.bargroup.com.au

Distributed in New Zealand by



POWER EQUIPMENT

CONTACT DETAILS

BE Pressure Supply
541D Te Rapa Road, Te Rapa,
Hamilton 3200, New Zealand
Phone: 07 849 0000
www.bepressure.co.nz

Errors and omissions excepted.
Specifications and performance may change.
Version 5.1; 2021