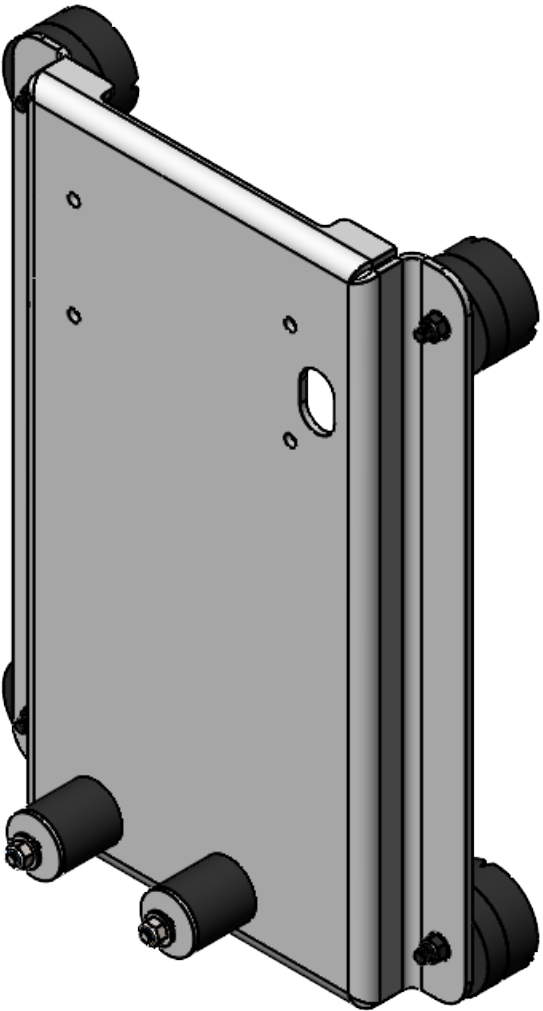



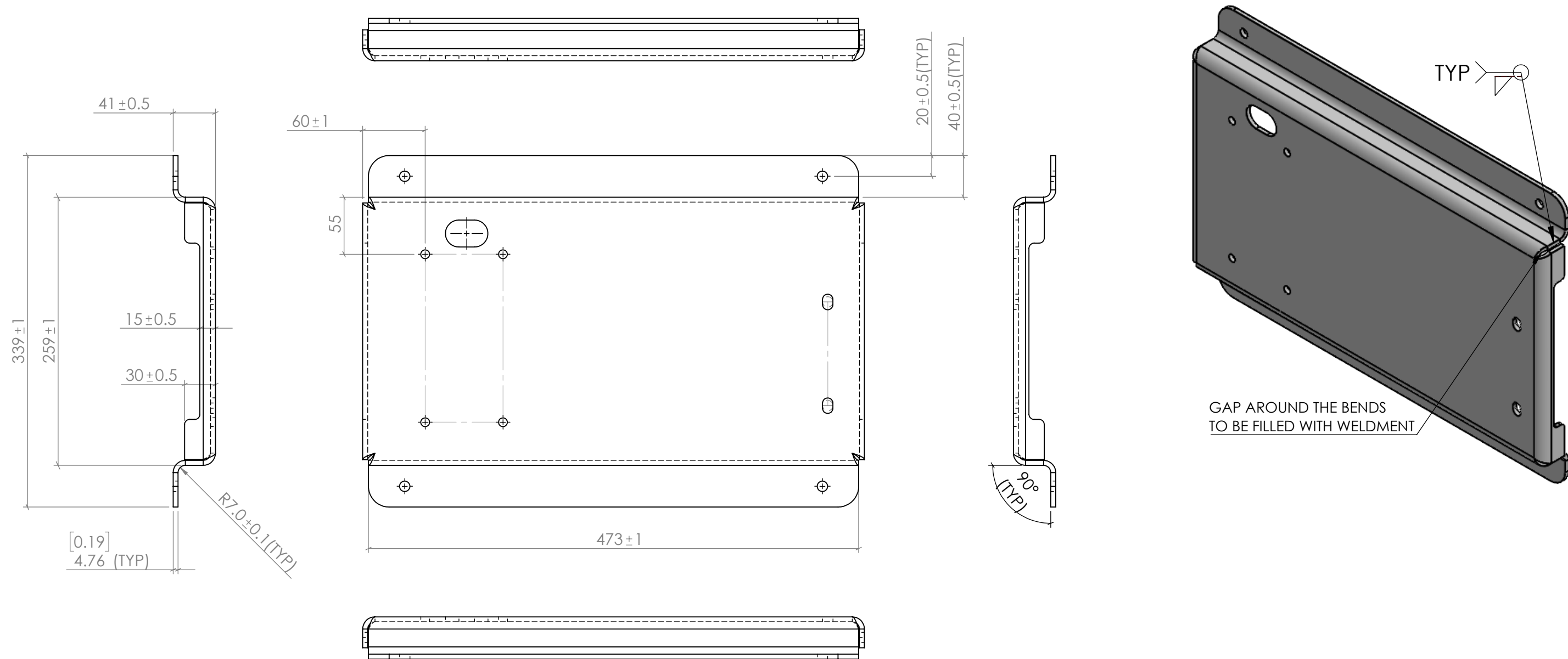
ITEM NO.	PART NUMBER	DESCRIPTION	QTY.
1	85.600.140-01	SOFT WASH FRAME BASE PLATE	1
2	85.600.221-08R2	BASE PLATE SHOCK ABSORBER	2
3	85.660.009HD(R2)	RUBBER FOOT KIT 85 SHORE A DUOMETER	4
4	NA	FLAT WASHER, M8X20, 2mm THICK-ZINC PLATED	4
5	NA	FLAT WASHER, M10X40, 3mm THICK-ZINC PLATED	2
6	NA	Nylock Nut, M8, ZINC PLATED	4



- NOTES:
- 1. RUBBER FEET TO BE ASSEMBLED.
 - 2. SHOCK ABSORBERSE AND THE RELATED HARDWARE TO BE PACKED IN A PLASTIC BAG.
 - 3. ENTIRE ASSEMBLY TO BE PACKED IN A CARDBOARD BOX.

REVISIONS				
REV.	DESCRIPTION	NAME	DATE	CHECKED
1	INITIAL RELEASE			


	UNLESS OTHERWISE SPECIFIED: DIMENSIONS ARE IN MM TOLERANCES: ANGULAR BENDS: ±1° ONE PLACE DECIMAL: ±0.1 TWO PLACE DECIMAL: ±0.01	DRAWN BY:	HAMID L	09/27/21	FRAME FINAL ASSEMBLY			
		CHECKED BY:	RG	10/01/21				
		APPROVAL BY:						
		NOTE: DO NOT SCALE DRAWING						
PROPRIETARY AND CONFIDENTIAL THE INFORMATION CONTAINED IN THIS DRAWING IS THE SOLE PROPERTY OF BE POWER EQUIPMENT. ANY REPRODUCTION IN PART OR AS A WHOLE WITHOUT THE WRITTEN PERMISSION OF BE POWER EQUIPMENT IS PROHIBITED.	MATERIAL	COMMENTS:			SIZE B	DWG. NO. 85.600.140	REV 1	
	1060 ALUMINUM, 5 GAUGE (4.76)	FIRST RELEASE						
	FINISH							
	SEE DETAILS							
					SCALE: 1:4	WEIGHT: 4086.84	SHEET 1 OF 8	

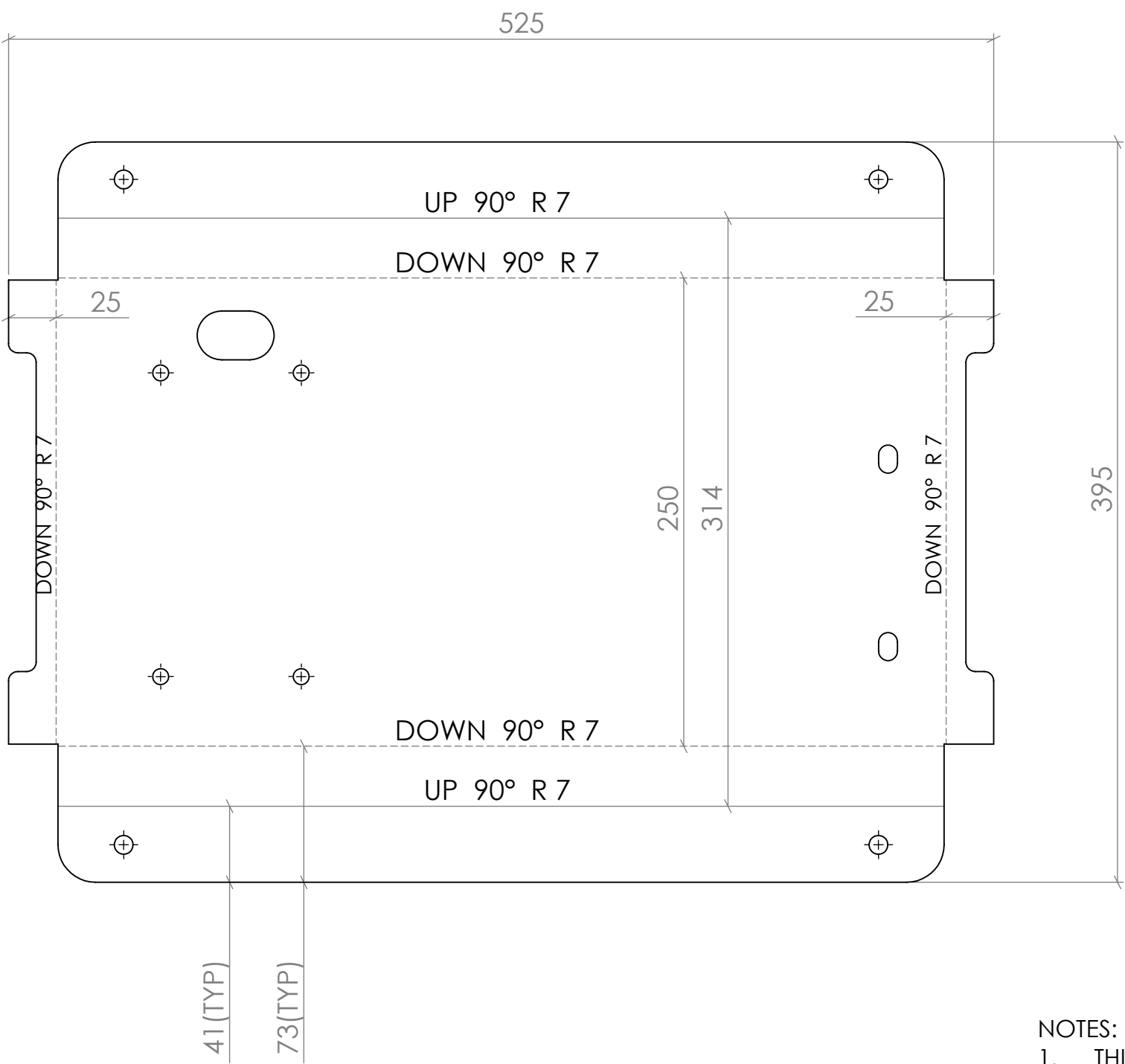


NOTES:


1. INSIDE RADIUS TO BE 7.5mm FOR ALL THE BENDS
2. THE APPLIED GUSSETS ARE 8mm WIDE, 3mm DEEP, AND 3mmTHICK.
3. REMOVE SHARP EDGES, AND WELDSLAC
- 4.

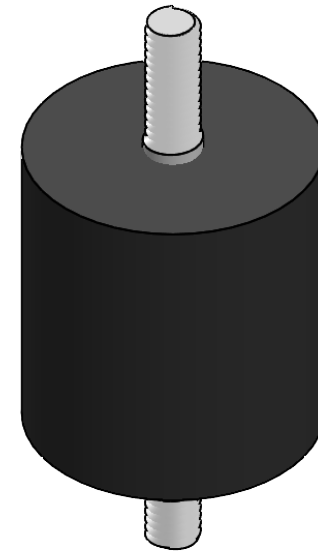
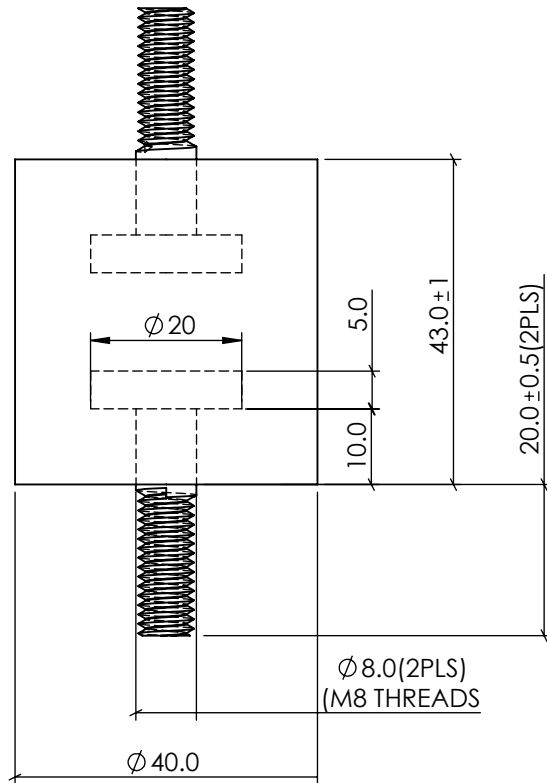
4.

		UNLESS OTHERWISE SPECIFIED: DIMENSIONS ARE IN MM TOLERANCES: ANGULAR BENDS: ±1° ONE PLACE DECIMAL: ±0.1 TWO PLACE DECIMAL: ±0.01	NAME		DATE			
			DRAWN BY:		HAMID L 09/24/21			
			CHECKED BY:		RG 10/01/21			
			APPROVAL BY:					
PROPRIETARY AND CONFIDENTIAL THE INFORMATION CONTAINED IN THIS DRAWING IS THE SOLE PROPERTY OF BE POWER EQUIPMENT. ANY REPRODUCTION IN PART OR AS A WHOLE WITHOUT THE WRITTEN PERMISSION OF BE POWER EQUIPMENT IS PROHIBITED.			NOTE: DO NOT SCALE DRAWING					
			COMMENTS:					
			FIRST RELEASE					
		MATERIAL	1060 ALUMINUM, 5 GAUGE (4.76mm)		SIZE B	DWG. NO. 85.600.140-01		REV 1
		FINISH						
		NATURAL						
					SCALE: 1:4		WEIGHT: 2474.22	SHEET 2 OF 8



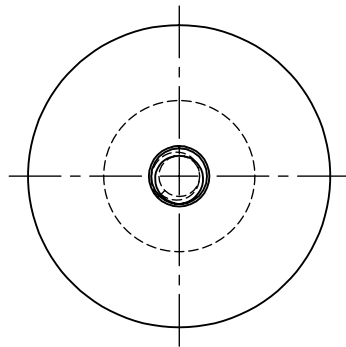
- NOTES:
- THIS PAGE SHOWS BENDING DETAILS.
 -

<div></div> <div>PROPRIETARY AND CONFIDENTIAL</div> <div>THE INFORMATION CONTAINED IN THIS DRAWING IS THE SOLE PROPERTY OF BE POWER EQUIPMENT. ANY REPRODUCTION IN PART OR AS A WHOLE WITHOUT THE WRITTEN PERMISSION OF BE POWER EQUIPMENT IS PROHIBITED.</div>		UNLESS OTHERWISE SPECIFIED: DIMENSIONS ARE IN MM TOLERANCES: ANGULAR BENDS: ±1° ONE PLACE DECIMAL: ±0.1 TWO PLACE DECIMAL: ±0.01		DRAWN BY: HAMID L 09/24/21		TITLE: SOFT WASH FRAME BASE PLATE					
				CHECKED BY: RG 10/01/21							
				APPROVAL BY:							
		NOTE: DO NOT SCALE DRAWING									
				COMMENTS:							
		1060 ALUMINUM, 5 GAUGE (4.76mm)		FIRST RELEASE		SIZE B		DWG. NO. 85.600.140-01		REV 1	
FINISH											
NATURAL											



NOTES:

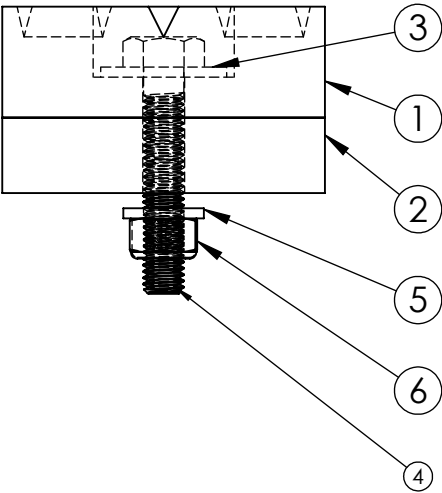
1. DRAWING FOR THE SHOCK ABSORBER IS NOT MEANT TO BE EXACT. A SIMILAR PART MIGHT BE AVAILABLE IN THE MARKET THAT COULD BE SUBSTITUTE, BUT OVERAL SHAPE, AND DIMENSIONS MUST BE HOLD.
2. THE BOLT BLOCKS ARE EMBEDDED IN THE RUBBER.
3. IN THE 2nd. VERSION, ADDED 8mm TO HEIGHT OF THE RUBBER PART (SEE COMMENTS)



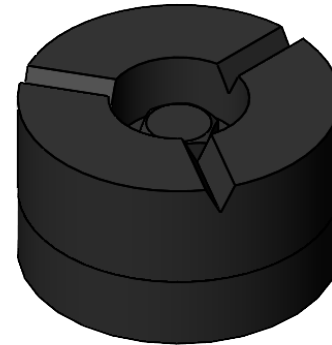
PROPRIETARY AND CONFIDENTIAL
THE INFORMATION CONTAINED IN THIS DRAWING IS THE SOLE PROPERTY OF <INSERT COMPANY NAME HERE>. ANY REPRODUCTION IN PART OR AS A WHOLE WITHOUT THE WRITTEN PERMISSION OF <INSERT COMPANY NAME HERE> IS PROHIBITED.

		UNLESS OTHERWISE SPECIFIED:		NAME	DATE	BE POWERE EQUIPMENT INC.		
		DIMENSIONS ARE IN INCHES	DRAWN	HAMID L	07/17/17	TITLE: SHOCK ABSORBER		
		TOLERANCES:	CHECKED		12/12/17			
		FRACTIONAL ±	ENG APPR.					
		ANGULAR: MACH ± BEND ±	MFG APPR.					
		TWO PLACE DECIMAL ±				SIZE DWG. NO. REV A 85.600.221-08 2		
		THREE PLACE DECIMAL ±	Q.A.					
		INTERPRET GEOMETRIC TOLERANCING PER:	COMMENTS:			FIRST RELEASE		
		MATERIAL RUBBER, 65DUROMETER HARDNESS, & M8 BOLTS EMBEDDED IN FINISH						
NEXT ASSY	USED ON	BLACK RUBBER						
APPLICATION		DO NOT SCALE DRAWING				SCALE: 1:1 WEIGHT: 464.11 SHEET 5 OF 8		

B



ITEM NO.	PART NUMBER	DESCRIPTION	QTY.
1	85.660.009HD-01R2	RUBBER FOOT (BLACK)	1
2	85.600.009HD-02R2	RUBBER FOOT SPACER (BLACK), 15mm THICK	1
3	NA	FLAT WASHER, M8X25, 2mm THICK- BLACK ZINC PLATED	1
4	NA	BOLT- HEX HEAD, M8X45- BLACK ZINC PLATED	1
5	NA	FLAT WASHER, M8X16, 2mm THICK- BLACK ZINC PLATED	1
6	NA	Nylock Nut, M8, BLACK ZINC PLATED	1



B

NOTES:

1. ENTIRE ASSEMBLY TO BE PACKED AS A KIT.
2. IN THE 2nd. REVISION, HARDNESS IS CHANGED TO 80 ± 5 SHORE A DUROMETER (WAS 85).

A

PROPRIETARY AND CONFIDENTIAL
THE INFORMATION CONTAINED IN THIS DRAWING IS THE SOLE PROPERTY OF <INSERT COMPANY NAME HERE>. ANY REPRODUCTION IN PART OR AS A WHOLE WITHOUT THE WRITTEN PERMISSION OF <INSERT COMPANY NAME HERE> IS PROHIBITED.

		UNLESS OTHERWISE SPECIFIED:		NAME	DATE	BE POWER EQUIPMENT INC.		
		DIMENSIONS ARE IN INCHES	DRAWN	HAMID L	03/10/20	TITLE: RUBBER FOOT KIT 85 SHORE A DUOMETER		
		TOLERANCES:	CHECKED	DN	04/29/20			
		FRACTIONAL \pm	ENG APPR.					
		ANGULAR: MACH \pm BEND \pm	MFG APPR.					
		TWO PLACE DECIMAL \pm	Q.A.					
		THREE PLACE DECIMAL \pm	COMMENTS:			SIZE	DWG. NO.	REV
		INTERPRET GEOMETRIC TOLERANCING PER:	IN THE 2ND. REVISION, HARDNESS IS CHANGED TO 80 ± 5 (WAS 85)			A	85.660.009HD	2
		MATERIAL SEE DETAILS						
NEXT ASSY	USED ON	FINISH BLACK (SEE DETAILS)						
APPLICATION		DO NOT SCALE DRAWING						
						SCALE: 1:1.5		
						SHEET 6 OF 8		

2

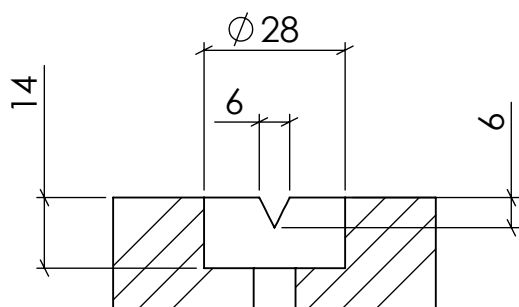
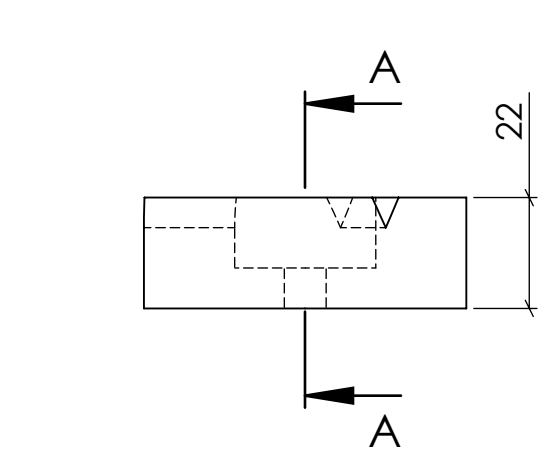
1

B

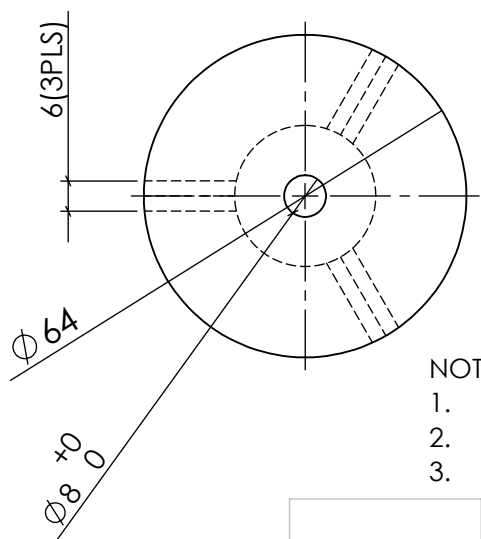
A

B

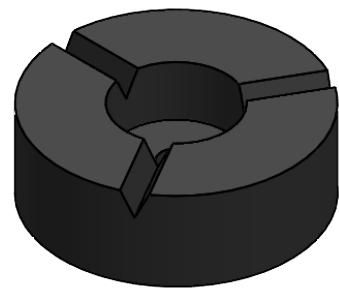
A



SECTION A-A



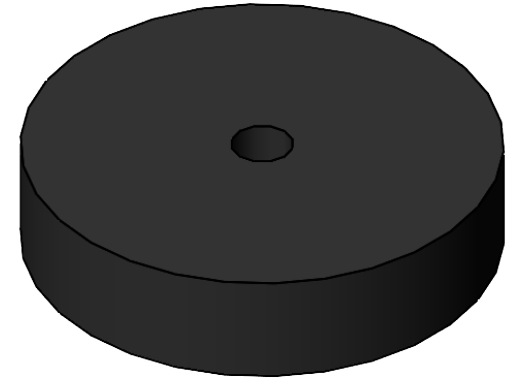
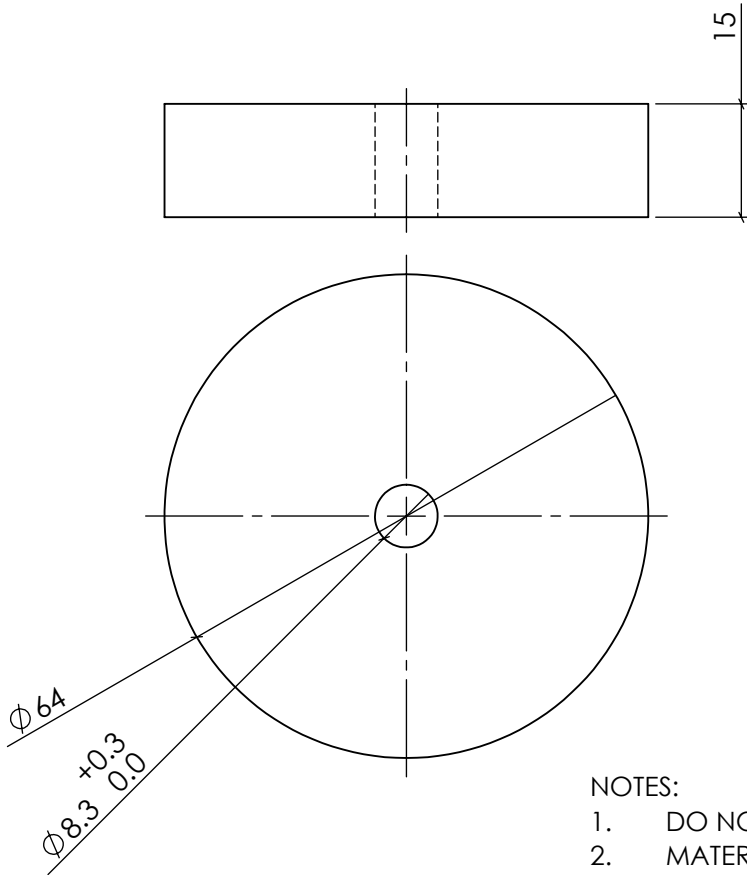
- NOTES:
- 1. DO NOT USE RECYCLED MATERIAL.
 - 2. MATERIAL TO BE BLACK EPDM, 80+ -5 SHORE A DUROMETER HARDNESS.
 - 3. IN THE 2nd. REVISION, HARNESS IS CHANGED TO 80±5 SHORE A DUROMETER (WAS 85).



PROPRIETARY AND CONFIDENTIAL
THE INFORMATION CONTAINED IN THIS DRAWING IS THE SOLE PROPERTY OF <INSERT COMPANY NAME HERE>. ANY REPRODUCTION IN PART OR AS A WHOLE WITHOUT THE WRITTEN PERMISSION OF <INSERT COMPANY NAME HERE> IS PROHIBITED.

		UNLESS OTHERWISE SPECIFIED:		NAME	DATE
		DIMENSIONS ARE IN INCHES	DRAWN	HAMID L	03/06/20
		TOLERANCES:	CHECKED	DN	04/29/20
		FRACTIONAL ±	ENG APPR.		
		ANGULAR: MACH ± BEND ±	MFG APPR.		
		TWO PLACE DECIMAL ±	Q.A.		
		THREE PLACE DECIMAL ±	COMMENTS:	IN THE 2nd. REVISION, HARDNESS IS CHANGED TO 80±5 SHORE A DUROMETER (WAS 85).	
		INTERPRET GEOMETRIC TOLERANCING PER:			
		MATERIAL EPDM, 80±5 SHORE A DUROMETER			
		FINISH BLACK			
NEXT ASSY	USED ON				
APPLICATION		DO NOT SCALE DRAWING			

TITLE: RUBBER FOOT (BLACK)					
SIZE	DWG. NO.			REV	
A	85.660.009HD-01			2	
SCALE: 1:1.5		WEIGHT: 71.73	SHEET 7 OF 8		



- NOTES:
- DO NOT USE RECYCLED MATERIAL.
 - MATERIAL TO BE BLACK EPDM, 80+ -5 SHORE A DUROMETER HARDNESS.
 - IN THE 2nd. REVISION, HARNESS IS CHANGED TO 80±5 SHORE A DUROMETER (WAS 85).

<div>PROPRIETARY AND CONFIDENTIAL</div> <div>THE INFORMATION CONTAINED IN THIS DRAWING IS THE SOLE PROPERTY OF <INSERT COMPANY NAME HERE>. ANY REPRODUCTION IN PART OR AS A WHOLE WITHOUT THE WRITTEN PERMISSION OF <INSERT COMPANY NAME HERE> IS PROHIBITED.</div>			UNLESS OTHERWISE SPECIFIED:		NAME	DATE	TITLE: RUBBER FOOT SPACER (BLACK), 15mm THICK		
			DIMENSIONS ARE IN INCHES	DRAWN	HAMID L	03/06/20			
			TOLERANCES:	CHECKED	DN	05/04/20			
			FRACTIONAL ±	ENG APPR.					
			ANGULAR: MACH ± BEND ±	MFG APPR.					
			TWO PLACE DECIMAL ±	Q.A.					
			THREE PLACE DECIMAL ±	COMMENTS:					
			INTERPRET GEOMETRIC TOLERANCING PER:	IN THE 2nd. REVISION, HARDNESS IS CHANGED TO 80±5 (WAS 85)					
			MATERIAL						
			BLACK EPDM, 80±5 SHORE A DUROMETER						
	NEXT ASSY	USED ON	FINISH				SIZE	DWG. NO.	REV
			BLACK				A	85.600.009HD-02	2
	APPLICATION		DO NOT SCALE DRAWING				SCALE: 1:1	WEIGHT: 42.70	SHEET 8 OF 8