



POWER EQUIPMENT

165 G3500i-RE 2WS KIT

G3500i-RE 2-Wire Start Kit INSTALLATION ISNTRUCTIONS



1. Remove the side covers from the generator, the RHS cover is connected by the recoil rope but can be rotated out of the way when access is required.



2. Remove the bolts for the front face, there are 4 on the front and 2 from the top and each side.
The front cover cannot be removed due to other connections but it is only required to be loose so the wires can be fed through. **(See step 6)**

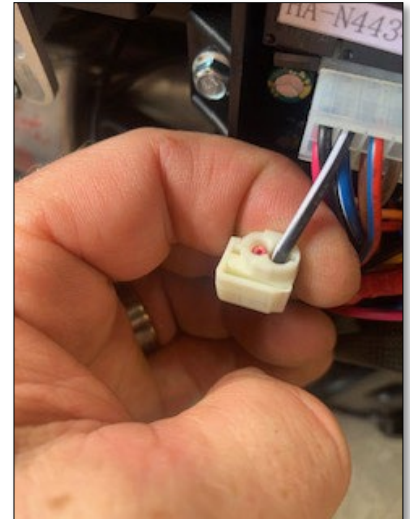
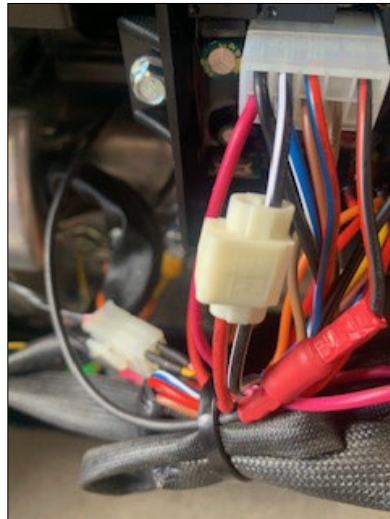
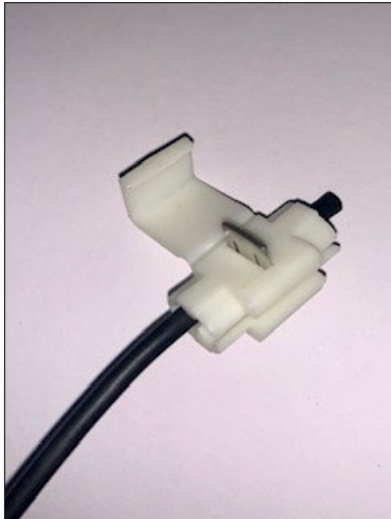


3. Fit the main box as pictured. It is a tight fit and the engine may need to be pushed on the rubber mounts to allow space for the bolt to be fitted into the slot.
Once in place, tighten the nut to secure the box in place.



4. Feed the 2 wires on the inner side of the box across to the far side and connect the black to the 'red and black' wire.
- Connect the red wire to the 'black and white' wire.

*Clamp the wires with the splice connectors supplied using pliers to ensure they are fully closed and connected.



5. At the box, connect the red wire to the battery active, and the black wire with the ring to the rocker cover bolt for earth.



6. On the front cover, drill a 16.5mm hole in the lower section as shown. Feed the wires through and across to the left-hand side towards the box. Secure the connector with the self-drilling screws to hold it in position.

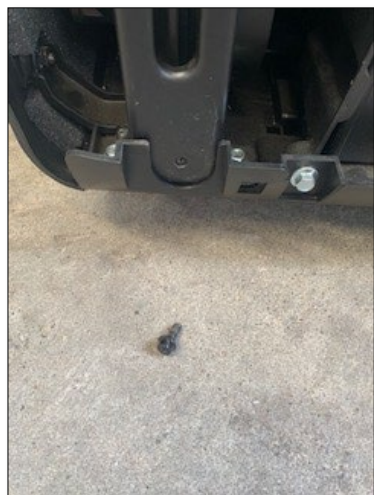
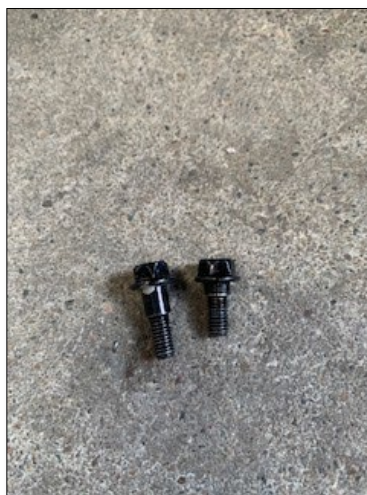


7. Connect the 2 red connectors together and bolt the ring terminal to rocker cover bolt for earth.



8. Refit the front cover, then refit the side covers, insert the locating tabs at the bottom first.

Note: - The shorter bolt is fitted to the bottom hole furthest from the wheels.



9. For use, make sure the engine switch is in the on position.

- When the two wires **make connection** the generator will **start**.
- When the two wires **are disconnected** the generator will **stop**.

(Generator can be started and stopped without the 2 wire connection using the standard switch or remote.)



10. After use, make sure the engine switch is turned off, as leaving this in the on position will flatten the battery.



Note: For heavy Start/Stop use or standby applications it is recommended a suitable trickle charger is connected to the battery.

Battery charger must be compatible with Lithium-Ion Batteries

Distributed in Australia by



CONTACT DETAILS

B.A.R Group P/L
15 Hudson Place,
Mulgrave, NSW, Australia 2756
Phone: 02 4577 2144
www.bargroup.com.au

Distributed in New Zealand by



POWER EQUIPMENT

CONTACT DETAILS

BE Pressure Supply
541D Te Rapa Road, Te Rapa,
Hamilton 3200, New Zealand
Phone: 0800 237 769
www.bepressure.co.nz

Errors and omissions excepted