



WHIRL-A-WAY

85.403.003

85.403.005

85.403.007

85.403.009

85.403.010

85.403.011

User Manual



INTRODUCTION



Attention: Read through the complete manual prior to the initial use of your Whirl-A-Way

Using the Operator's manual

The operating manual is an important part of your Whirl-A-Way. It should be read thoroughly before initial use and referred to often to make sure adequate safety and service concerns are being addressed.

Reading the owner's manual thoroughly will help avoid personal injury or damage to your pump. The information in this manual will offer you the most effective tools for cleaning as well as the safest. By knowing how best to operate this machine you will be better positioned to show others who may also operate the unit.

This manual contains information for the complete range of BE Whirl-A-Ways, and is placed in order starting from the safety requirements to the operating functions of your pump. You can refer back to the manual at any time to help troubleshoot any specific operating functions, so store it with the machine at all times.



WARNING

This product can expose you to chemicals including lead, which is known to the State of California to cause cancer and birth defects or other reproductive harm. For more information, go to www.P65Warnings.ca.gov. Wash hands after handling.



Record Identification Numbers

Whirl-A-Way

If you need to contact an Authorized Dealer or Customer Service line (61-2-4577-2144) for information on servicing, always provide the product model and identification numbers.

You will need to locate the model and serial number for the pump and record the information in the places provided below.

Date of Purchase:

Dealer Name:

Dealer Phone:

Product Identification Numbers

Model Number:

Serial Number:



OPERATING INSTRUCTIONS

Set-Up

1. Fit the lower portion of the handle into the mounting brackets on the cover and secure with the bolts or the pins & clips.
2. Next, tighten the “fixed” hose end into the gun mounted onto the upper portion of the handle. Use teflon tape on the hose ends.
3. Once this is complete, join the two sections of the handle together and secure with the bolt or the pin & clip. Tighten the swivel end of the hose into the top of the rotary head.
4. Turn the cover over and check to ensure that the nozzle tips are securely tightened and the spray pattern is in line with the rotary arm.
5. It is important to adjust and tighten the rotary head so the rotary arm spray tips are a minimum of 1” distance from the surface being cleaned.

Operation

The Surface Cleaning System you have purchased connects directly to your high pressure hose and pressure washer by means of quick couplers, operating to a maximum of 4000 PSI.

This Whirl-a-Way is designed to operate with both hot & cold water pressure washers. We do not recommend the use of hot water as the nylon brush skirt will soften and wear prematurely, voiding any warranty. We recommend that you supply grease to the rotary head every 30 - 40 hours of use.

During operation, should you experience a buildup of small stones or other foreign material within the cover, we recommend that you simply tip the cleaner on its side at 45° which should expel any foreign materials. This will give longer wear to your tips and swivel arm.

The tips that have been installed on your surface cleaning system permit the use of your cleaner with a pressure washer producing up to 7 GPM at 4000 PSI. Higher GPM tips should be installed if your pressure washer has a higher GPM/PSI rating. Periodically check the tips to ensure they are not plugged by dirt particles.

It is very important when operating your Whirl-a-Way, that you maintain a continuous motion. Should you leave the cleaner in a stationary position, the surface being cleaned can be seriously damaged by the high pressure. The distance of the nozzle tips from the surface can be adjusted by loosening the bolt on the rotary head mounting collar and adjusting the rotary head up or down. Be certain the allen head bolt is tightened again to prevent the rotary head from moving during operation.



Please ensure that your rotary head is adjusted to maintain a minimum of 1" clearance between the spray tips and the surface being cleaned.

While operating your surface cleaning system, please ensure that the nylon brush skirt remains in contact with the surface being cleaned. Do not operate on vertical or overhead surfaces. We strongly recommend that safety eye goggles, gloves and work boots be worn when operating this Whirl-a-Way. Keep hands and feet away from the high pressure, high speed rotating arm that is protected by the plastic cover.

Should your surface cleaner not be used for long periods of time, it is recommended that you remove the hose from the top of the rotary head and a vegetable oil be used to lubricate the swivel head's internal parts.

Manually turn the rotary arm to allow lubrication of all internal parts before storing.

You will quickly find your surface cleaning system a welcome addition to your pressure washing applications. It is designed to give you a safe and rapid method for cleaning hard surfaces, and will save you time in comparison to using a conventional gun and wand. The durability of this surface cleaning system is enhanced by the way it is handled by the operator. Please take care to ensure that the Whirl-A-Way is not continuously being swung against buildings, curbs, or other objects as this can damage the cover. Also, be aware that the high speed rotating arm must not come in contact with rigid protruding objects which can quickly damage or completely break off the steel arm. Finally, do not apply excessive weight to the plastic cover.

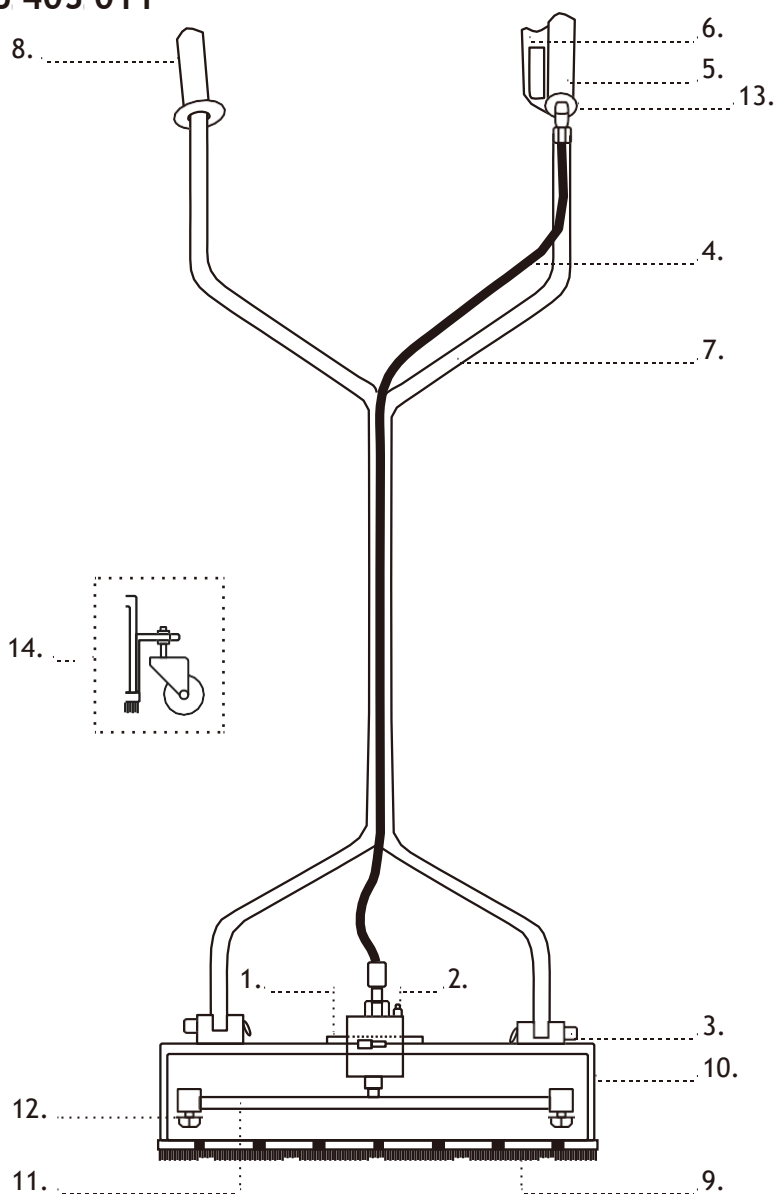


PARTS DIAGRAM

85 403 003

85 403 007

85 403 011





85 403 003

NO#	PART #	DESCRIPTION
1	85.792.003	Bracket, Mounting Head 16"
2	85.790.004	Rotary Head, 16"
3	85.792.004	Mounting Blocks
4	85.238.059	Hose, 62" x 3/8"
5	AC7501	Easy Pull Gun
6	85.300.105	Plug, 3/8" MNPT
7	85.792.008K	Handle
8	85.602.005	Hand Grip
9	85.792.010	Brush, 16"
10	85.792.009	Cover, Polypropylene 16"
11	85.792.011	Rotary Arm, 16"
12	85.225.025	Nozzle, 25 Deg. 025
13	85.791.020	Sleeve For DC5090 WAW Gun

85 403 007

NO#	PART #	DESCRIPTION
1	85.792.003	Bracket, Mounting Head 20"
2	85.790.004	Rotary Head, 20"
3	85.792.004	Mounting Blocks
4	85.238.059	Hose, 62" x 3/8"
5	AC7501	Easy Pull Gun
6	85.300.105	Plug, 3/8" MNPT
7	85.792.002K	Handle
8	85.602.005	Hand Grip
9	85.792.006	Brush, 20"
10	85.792.005	Cover, Polypropylene 20"
11	85.792.007	Rotary Arm, 20"
12	85.225.025	Nozzle, 25 Deg. 025
13	85.791.020	Sleeve For DC5090 WAW Gun

85 403 011

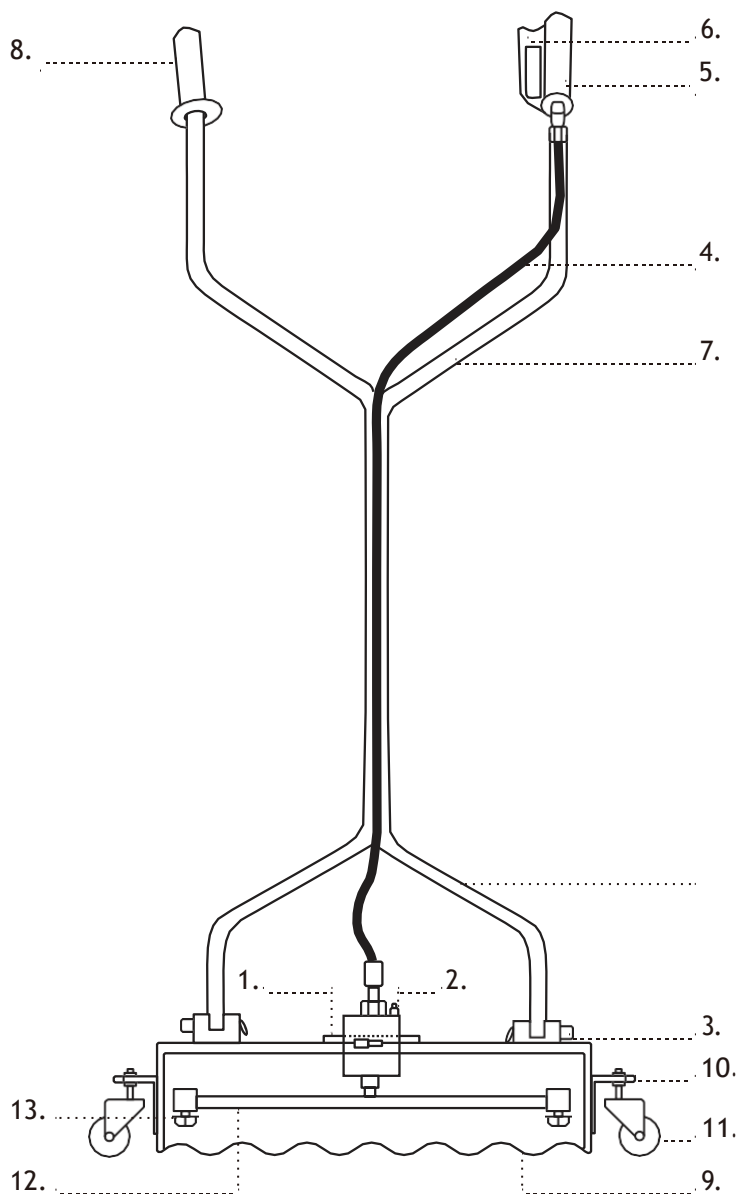
See 85.403.007 for parts 1-13.

NO#	PART #	DESCRIPTION
14	85.793.016	Castor Kit



PARTS DIAGRAM

85 403 005



PARTS LIST



85 403 005

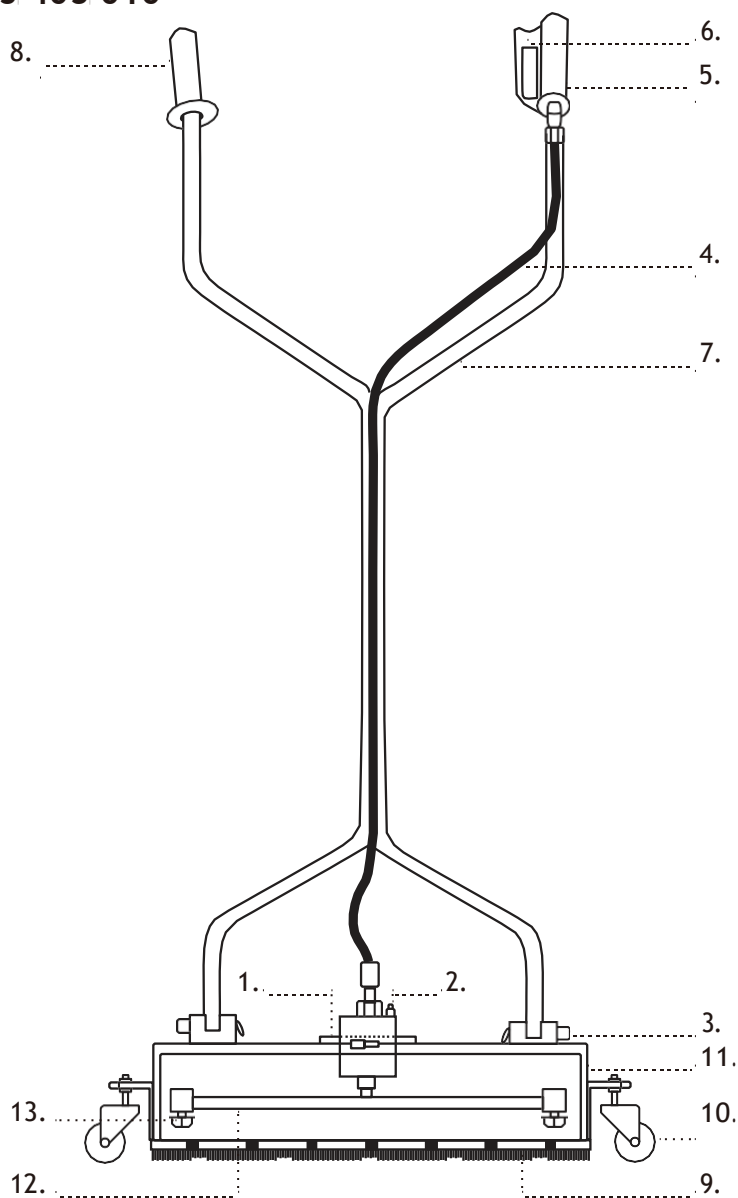
NO#	PART #	DESCRIPTION
1	85.791.001	Bracket, Mounting Head 18"
2	85.790.006	Rotary Head, 18"
3	85.419.116	Mounting Blocks
4	85.238.057	Hose, 62" x 3/8"
5	85.202.115	Spray Gun
6	85.300.105	Plug, 3/8" MNPT
7	85.419.040K	Handle
8	85.602.005	Hand Grip
9	85.790.029	Castor Wheel
10	85.419.046	Castor Bracket
11	85.419.019	Cover, Polypropylene 18"
12	85.791.007	Rotary Arm, 18"
13	85.225.025	Nozzle, 25 Deg. 025



PARTS DIAGRAM

85 403 009

85 403 010



PARTS LIST



85 403 009 85 403 015

NO#	PART #	DESCRIPTION
1	85.791.002	Bracket, Mounting Head 20"
2	85.790.004	Rotary Head, 20"
3	85.792.019	Mounting Blocks
4	85.238.059	Hose, 62" x 3/8"
5	AC7501	Spray Gun
6	85.300.105S	Plug, 3/8" MNPT
7	85.792.018K	Handle
8	85.602.005	Hand Grip
9	85.792.013	Brush Skirt, 20"
10	85.790.029	Castor Wheel
11	85.792.012	Cover, Stainless Steel 20"
12	85.792.017	Rotary Arm, 20" SS WAW, 2 Arm
12	85.791.010S	Rotary Arm, 20" SS WAW, 3 Arm
13	85.225.020	Nozzle, 25 Deg. 020

85 403 010 85 403 016

NO#	PART #	DESCRIPTION
1	85.791.002	Bracket, Mounting Head 24"
2	85.790.004	Rotary Head, 24"
3	85.792.019	Mounting Blocks
4	85.238.059	Hose, 62" x 3/8"
5	AC7501	Spray Gun
6	85.300.105S	Plug, 3/8" MNPT
7	85.792.018K	Handle
8	85.602.005	Hand Grip
9	85.792.015	Brush Skirt, 24"
10	85.790.029	Castor Wheel
11	85.792.014	Cover, Stainless Steel 24"
12	85.792.016	Rotary Arm, 24" SS WAW, 2 Arm
12	85.791.038	Rotary Arm, 24" SS WAW, 3 Arm
13	85.225.020	Nozzle, 25 Deg. 020



ROTARY HEAD REPAIR

Nozzle Requirement

PUMP OUTPUT	NOZZLE REQUIREMENT	QTY
3 GPM	85.225.020 (2 GPM/25°)	2
4 GPM	85.225.025 (2.5 GPM/25°)	2
5 GPM	85.225.030 (3 GPM/25°)	2
6 GPM	85.225.035 (3.5 GPM/25°)	2

Rotary Head Repair Parts

A repair kit for this Whirl-a-Way's rotary head, is available.

If you encounter problems with the rotary head after the 1 year warranty has expired, this repair kit (part #85.790.010) allows you to replace the inner components very quickly.

The rotary head has a snap ring on the bottom holding all the bearings inside. By removing the snap ring and washer, you can tap off the outer shell with a hammer while the output shaft is held in a vice. The rotary head repair kit can then be used to replace the worn items inside the rotary head shell.

NO#	PART #	DESCRIPTION
1	85.790.010	Rotary Head Rebuild Kit
2	85.790.001	Inlet Valve
3	85.790.002	Inlet Valve Viton O-Ring
4	85.790.011	Outlet Shaft



Warranty

This surface cleaning unit has a 1-Year warranty on all components except for the nylon brush ring. This includes the rotary head, spray gun, hose, the nylon brush ring, and plastic cover.

This warranty covers **manufacturer defects only** and does not extend to any damage caused by the user. It also does not extend to any wear and tear caused by regular use of the product.



**If you need assistance with the assembly
or operation of your Whirl-A-Way please call**

61-2-4577-2144