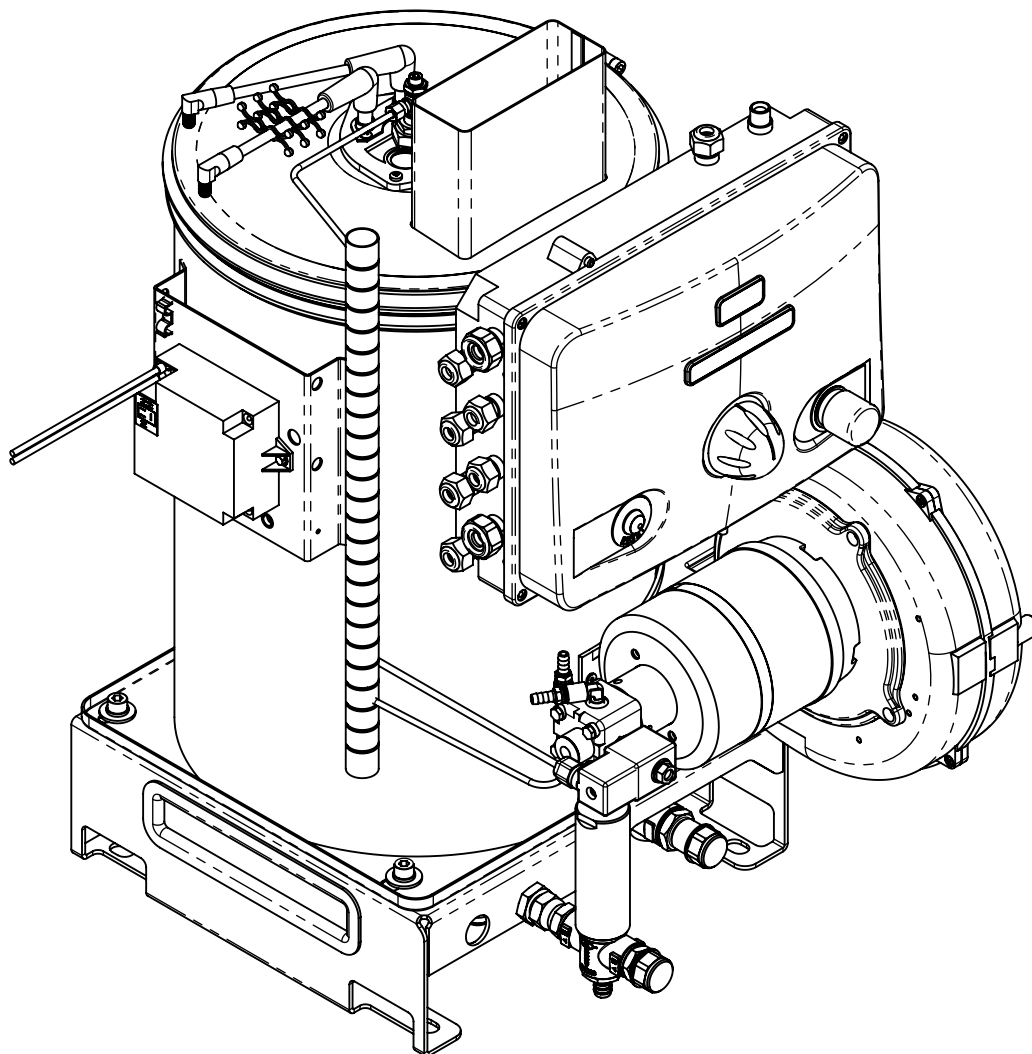


Boiler 15L 12V



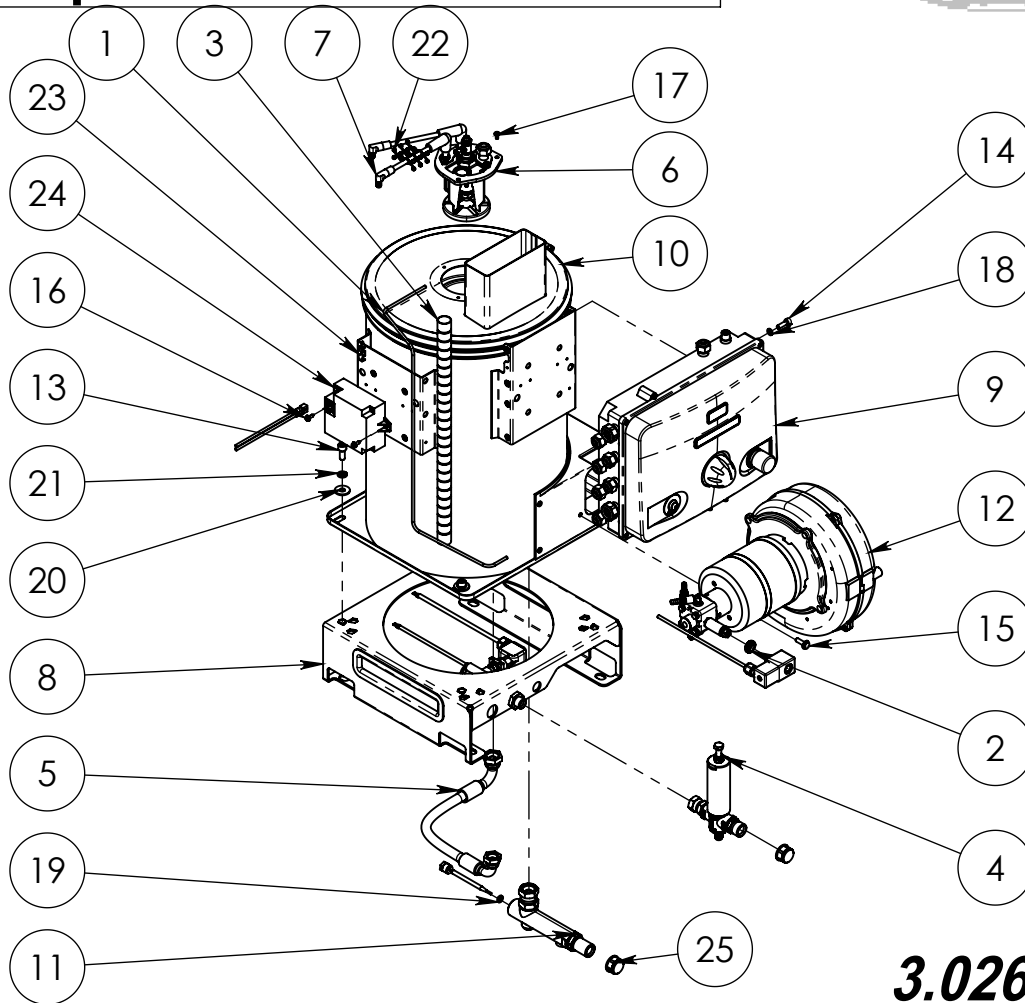
General table

Code	Flow Rate (Lt/min)	Pressure (Bar)	Pressure (Psi)	Diesel Nozzle	Motor (Volt)	Gpm	Net weight (Kg)	Net weight (Lbs)
3.026.02.037	15	250	3625.94	1.25	12	3.9	48	105.82

General table

Coil			
m	Thickness	ø	Ft
24	2.1	3/8"	78.7

Exploded Boiler Esploso Caldaia

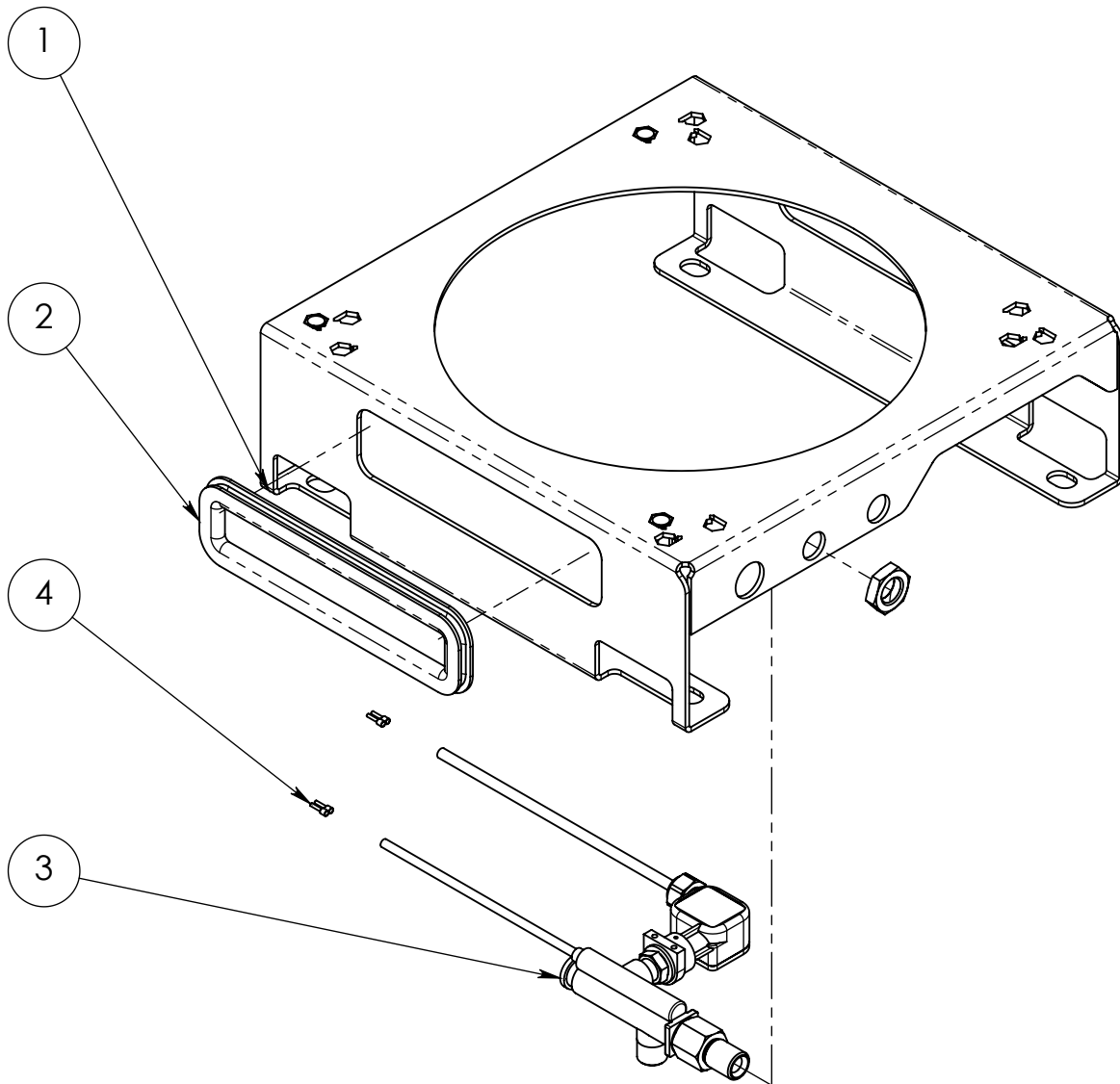


3.026.02.037.K

Pos.	Q.Ty	Code	ITALIANO	ENGLISH	DEUTSCH	ESPAÑOL	FRANCAIS
1	1	1.044.54.018	Tubo di rame	Branch tube	Niederlassung Schlauch	Tubo del rama	Tube de cuivre
2	1	1.060.02.017	Distanziale	Spacer	Distanzstueck	Distanciador	Entretoise
3	1	1.164.04.008	Guaina	Insulator	Isolator	Aislador	Isolateur
4	1	2.003.12.005	Valvola di sicurezza 15/25L/MIN 250BAR	Safety pressure valve 15/25L/MIN 250BAR	Max druck Einstellungsventile 15/25L/MIN 250BAR	Valvula de seguridad 15/25L/MIN 250BAR	Souape de sécurité 15/25L/MIN 250BAR
5	1	2.006.24.079	Tubo HP 3/8 R2 400BAR	Pipe HP 3/8 R2 400BAR	Rohr HP 3/8 R2 400BAR	Tubo HP 3/8 R2 400BAR	Tuyau HP 3/8 R2 400BAR
6	1	2.012.04.029	Coperchio elettrodi PH3025/3040	Electrodes cover PH3025/3040	Elektrodendeckel PH3025/3040	Tapón electrodos PH3025/3040	Couvercle électrodes PH3025/3040
7	2	2.020.04.035	Cavo L=600	Cable L=600	Kabel L=600	Cable L=600	Cable L=600
8	1	2.024.02.002	Supporto	Support	Halter	Soporte	Support
9	1	2.031.04.176	Quadro elettrico 12V	Electric panel 12V	Schalttafel 12V	Cuadro eléctrico 12V	Panneu électrique 12V
10	1	2.041.04.032	Caldaia 15L 250BAR	Boiler 15L 250BAR	Kessel 15L 250BAR	Caldera 15L 250BAR	Chaudière 15L 250BAR
11	1	2.048.04.018	Collettore 250BAR FIREBOX	Collector 250BAR FIREBOX	Kollektor 250BAR FIREBOX	Colector 250BAR FIREBOX	Collecteur 250BAR FIREBOX
12	1	3.038.02.018	Convogliatore 12V 50Hz	Conveyor 12V 50Hz	Foerderer 12V 50Hz	Convoyador 12V 50Hz	Convoyeur 12V 50Hz
13	3	4.002.14.005	Vite M8x20 UNI5931	Screw M8x20 UNI5931	Schrauben M8x20 UNI5931	Tornillo M8x20 UNI5931	Vis M8x20 UNI5931
14	4	4.002.14.020	Vite M6x20 UNI5931	Screw M6x20 UNI5931	Schrauben M6x20 UNI5931	Tornillo M6x20 UNI5931	Vis M6x20 UNI5931
15	2	4.002.92.011	Vite M6x20 UNI 8111	Screw M6x20 UNI 8111	Schrauben M6x20 UNI 8111	Tornillo M6x20 UNI 8111	Vis M6x20 UNI 8111
16	2	4.002.94.017	Vite autofilettante 3.9x13	Self-tapping Screw 3.9x13	Selbschneidendschraube 3.9x13	Tornillo autoblocante 3.9x13	Vis autofiletant 3.9x13
17	3	4.002.94.034	Vite Ph M4x8 UNI8112	Screw Ph M4x8 UNI8112	Schrauben Ph M4x8 UNI8112	Tornillo Ph M4x8 UNI8112	Vis Ph M4x8 UNI8112
18	4	4.008.02.001	Rondella 6.4x11x1.6 DIN433 UNI6592 ZEB	Washer 6.4x11x1.6 DIN433 UNI6592 ZEB	Unterlegscheibe 6.4x11x1.6 DIN433 UNI6592 ZEB	Arandela 6.4x11x1.6 DIN433 UNI6592 ZEB	Rondelle 6.4x11x1.6 DIN433 UNI6592 ZEB
19	1	4.008.12.003	Rondella Rame G1/4	Copper washer G1/4	Kupferunterlegsscheibe G1/4	Arandela de cobre G1/4	Rondelle cuivre G1/4
20	3	4.008.24.002	Rondella ø8.5x24x2.5 6593	Washer ø8.5x24x2.5 6593	Unterlegscheibe ø8.5x24x2.5 6593	Arandela ø8.5x24x2.5 6593	Rondelle ø8.5x24x2.5 6593
21	3	4.008.54.004	Rondella di sicurezza UNI1751 M8	Safety washer UNI1751 M8	Sicherheits Scheibe UNI1751 M8	Arandela de seguridad UNI1751 M8	Rondelle de sûreté UNI1751 M8
22	3	4.022.04.016	Fascetta 2x ø5.1/ø7.6	Clamp 2x ø5.1/ø7.6	Klemme 2x ø5.1/ø7.6	Faja 2x ø5.1/ø7.6	Petit bande 2x ø5.1/ø7.6
23	1	4.022.04.017	Fascetta 2xø6.4	Clamp 2xø6.4	Klemme 2xø6.4	Faja 2xø6.4	Petit bande 2xø6.4
24	1	4.030.04.007	Trasformatore 12V	Transformer 12V	Stromwandler 12V	Transformador 12V	Transformateur 12V
25	2	4.034.04.005	Tappo	Cap	Deckel	Tapón	Bouchon

Support Boiler 15/21L + Flow Switch 250BAR

Supporto Caldaia 15/21L + Flussostato 250BAR

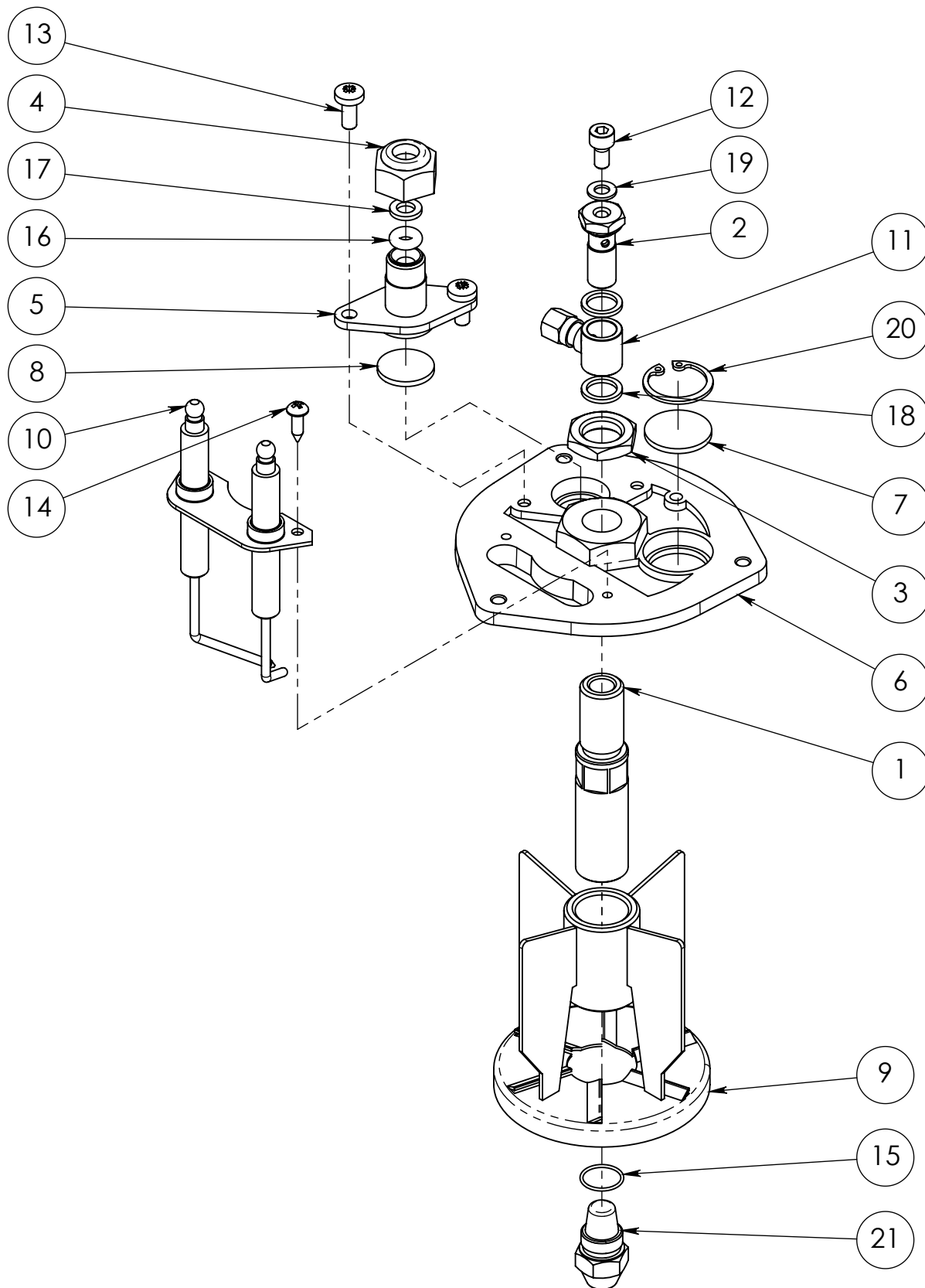


2.024.02.002 .E

Pos.	Q.Ty	Code	ITALIANO	ENGLISH	DEUTSCH	ESPAÑOL	FRANCAIS
1	1	1.011.02.009	Supporto	Support	Halter	Soporte	Support
2	1	1.046.04.032	Protezione	Protection	Schutz	Protección	Protection
3	1	2.086.02.003	Flussostato 250BAR	Flow switch 250BAR	Stromschalter 250BAR	Flusostato 250BAR	Flussostat 250BAR
4	4	4.024.14.002	Terminale (di cavo) 1mmq PKC108	Terminal 1mmq PKC108	Schuh 1mmq PKC108	Terminal 1mmq PKC108	Boites d'extrémité 1mmq PKC108

Electrodes cover PH3025/3040

Coperchio elettrodi PH3025/3040



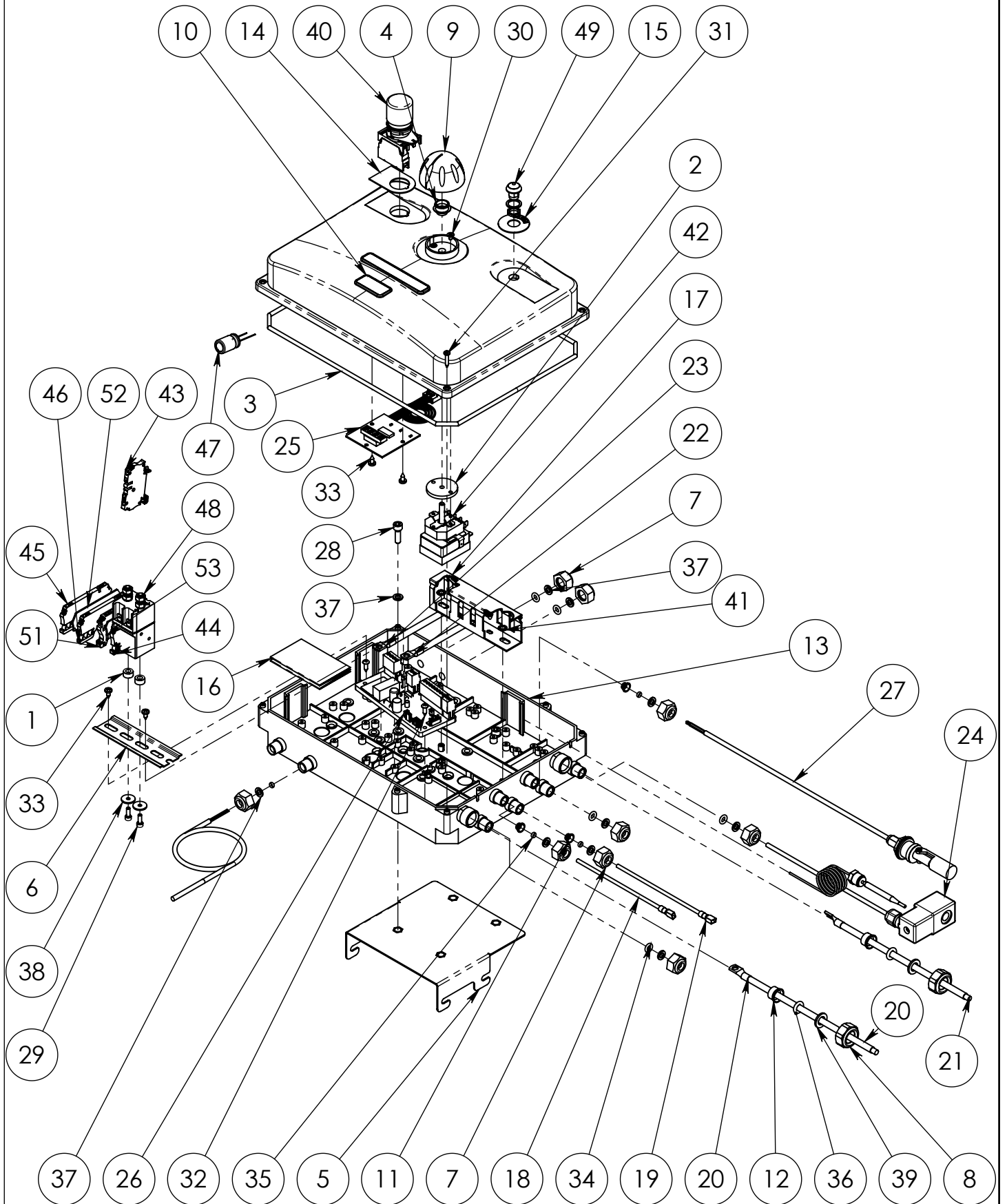
2.012.04.029.D



Pos.	Q.Ty	Code	ITALIANO	ENGLISH	DEUTSCH	ESPAÑOL	FRANCAIS
1	1	1.001.04.006	Raccordo 9/19 - G1/8	Connection 9/19 - G1/8	Leiste 9/19 - G1/8	Filete 9/19 - G1/8	Filet 9/19 - G1/8
2	1	1.012.14.012	Tappo G1/8+CONTR.PRESS.M5	Cap G1/8+CONTR.PRESS.M5	Deckel G1/8+CONTR.PRESS.M5	Tapón G1/8+CONTR.PRESS.M5	Bouchon G1/8+CONTR.PRESS.M5
3	1	1.015.24.003	Ghiera	Ferrule	Zwinge	Abrazadera	Embout
4	1	1.015.32.008	Ghiera G1/4"	Ferrule G1/4"	Zwinge G1/4"	Abrazadera G1/4"	Embout G1/4"
5	1	1.074.04.005	Flangia	Flange	Flansch	Borde	Bride
6	1	1.074.04.018	Flangia M15x1.5 (CF)	Flange M15x1.5 (CF)	Flansch M15x1.5 (CF)	Borde M15x1.5 (CF)	Bride M15x1.5 (CF)
7	1	1.102.04.001	Vetrino	Glass	Glass	Vidrio	Vèrre
8	1	1.102.04.003	Vetrino ø19	Glass ø19	Glass ø19	Vidrio ø19	Vèrre ø19
9	1	2.009.04.002	Deflettore Work	Deflector Work	Deflektor Work	Deflector Work	Défecteur Work
10	1	2.032.04.004	Elettrodi	Electrodes	Elektrode	Electrodos	Electrodes
11	1	3.050.34.001	Raccordo	Connection	Leiste	Filete	Filet
12	1	4.002.14.022	Vite M5x10 UNI5931	Screw M5x10 UNI5931	Schrauben M5x10 UNI5931	Tornillo M5x10 UNI5931	Vis M5x10 UNI5931
13	2	4.002.72.001	Vite M5x12 UNI7687	Screw M5x12 UNI7687	Schrauben M5x12 UNI7687	Tornillo M5x12 UNI7687	Vis M5x12 UNI7687
14	2	4.002.94.005	Vite autofilettante 3.9x13	Self-tapping Screw 3.9x13	Gewindeschneidschraube 3.9x13	Tornillo Self-tapping 3.9x13	Vies Autoflettante 3.9x13
15	1	4.005.14.004	OR 0130-1	O-ring 0130-1	O-ring 0130-1	OR 0130-1	Joint torique 0130-1
16	1	4.005.24.013	Guarnizione OR ø4.34X3.53	Gasket OR ø4.34X3.53	Dichtung OR ø4.34X3.53	Guarnición OR ø4.34X3.53	Garniture OR ø4.34X3.53
17	1	4.008.02.001	Rondella 6.4x11x1.6 DIN433 UNI6592 ZEB	Washer 6.4x11x1.6 DIN433 UNI6592 ZEB	Unterlegscheibe 6.4x11x1.6 DIN433 UNI6592 ZEB	Arandela 6.4x11x1.6 DIN433 UNI6592 ZEB	Rondelle 6.4x11x1.6 DIN433 UNI6592 ZEB
18	2	4.008.12.005	Rondella Rame G1/8	Copper washer G1/8	Kupferunterlegscheibe G1/8	Arandelade cobre G1/8	Rondelle cuivre G1/8
19	1	4.008.14.003	Rondella Rame M5	Copper washer M5	Kupferunterlegscheibe M5	Arandela de cobre M5	Rondelle cuivre M5
20	1	4.025.04.002	Seeger	Seeger	Seeger	Seeger	Seeger
21	1	4.027.14.005	Ugello 1.25 (60°S)	Nozzle 1.25 (60°S)	Duse 1.25 (60°S)	Boquilla 1.25 (60°S)	Buse 1.25 (60°S)

Electric pannel 12V

Quadro elettrico 12V



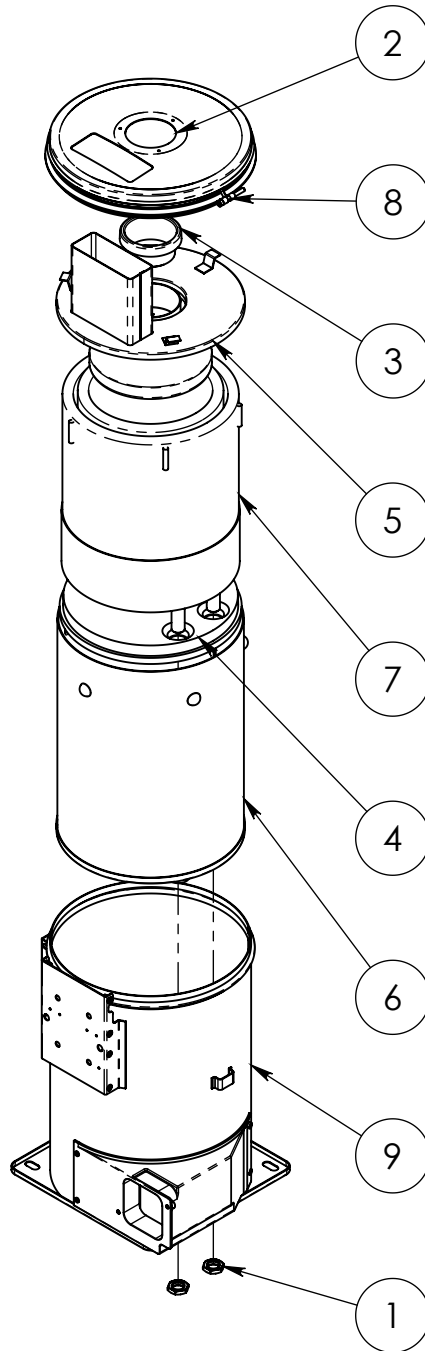
2.031.04.176.0



Pos.	Q.Ty	Code	ITALIANO	ENGLISH	DEUTSCH	ESPAÑOL	FRANCAIS
1	2	1.006.11.007	Guarnizione ø6xø11.8x6	Gasket ø6xø11.8x6	Dichtung ø6xø11.8x6	Guarnición ø6xø11.8x6	Garniture ø6xø11.8x6
2	1	1.006.14.001	Guarnizione ø36	Gasket ø36	Dichtung ø36	Guarnición ø36	Garniture ø36
3	1	1.006.14.004	Guarnizione ø4x1020	Gasket ø4x1020	Dichtung ø4x1020	Guarnición ø4x1020	Garniture ø4x1020
4	1	1.006.14.012	Guarnizione	Gasket	Verzierung	Guarnición	Garniture
5	1	1.008.04.084	Piastra	Plate	Platte	Placa	Plat
6	1	1.011.04.081	Supporto L110	Support L110	Halter L110	Soporte L110	Support L110
7	9	1.015.32.008	Ghiera G1/4"	Ferrule G1/4"	Zwinge G1/4"	Abrazadera G1/4"	Embout G1/4"
8	2	1.015.32.015	Ghiera 1/2 G-F Pl. 15	Ferrule 1/2 G-F Pl. 15	Zwinge 1/2 G-F Pl. 15	Abrazadera 1/2 G-F Pl. 15	Embout 1/2 G-F Pl. 15
9	1	1.021.04.006	Manopla	Knob	Griff	Pomo	Poignée
10	1	1.054.04.055	Coperchio scatola elettrica	Electrical box cover	Elektro-Deckel	Cubierta de la caja eléctrica	Couverture de boîte électrique
11	3	1.064.04.010	Boccola	Bushing	Buchse	Buje	Boucle
12	2	1.064.04.024	Pressacavo ø12	Cable clamping ø12	Kabelklemme ø12	Prensacables ø12	Serre-câble ø12
13	1	1.078.04.054	Scatola elettrica	Electric case	Elektrokasten	Caja eléctrica	boîte électrique
14	1	1.087.04.301	Etichetta	Label	Etikett	Etiqueta	Étiquette
15	1	1.087.04.303	Etichetta reset	Label reset	Etikett reset	Etiqueta reset	Étiquette reset
16	1	1.093.04.128	Schema collegamento caldaia 12-24V	Boilers conncion 12-24V	Elektrish Verbindung 12-24V	Esquema colegamento calderas 12-24V	Schéma de connexion chaudières 12-24V
17	1	1.110.04.003	Canaletta T1 25x40 G L140	Groove T1 25x40 G L140	Nut T1 25x40 G L140	Surco T1 25x40 G L140	Cannelure T1 25x40 G L140
18	1	2.020.14.131	Cavo elettrico 2.5mmqx1500	Power cable 2.5mmqx1500	Energie kabel 2.5mmqx1500	Cable electrico 2.5mmqx1500	Cable électrique 2.5mmqx1500
19	1	2.020.14.132	Cavo elettrico 2.5mmqx1500	Power cable 2.5mmqx1500	Energie kabel 2.5mmqx1500	Cable electrico 2.5mmqx1500	Cable électrique 2.5mmqx1500
20	1	2.020.14.140	Cavo 16mmq	Cable 16mmq	Kabel 16mmq	Cable 16mmq	Cable 16mmq
21	1	2.020.14.141	Cavo 16mmq	Cable 16mmq	Kabel 16mmq	Cable 16mmq	Cable 16mmq
22	1	2.020.14.142	Cavo 110x16mmq	Cable 110x16mmq	Kabel 110x16mmq	Cable 110x16mmq	Cable 110x16mmq
23	1	2.020.14.143	Cavo 120x16mmq	Cable 120x16mmq	Kabel 120x16mmq	Cable 120x16mmq	Cable 120x16mmq
24	1	2.083.02.001	Bobina 12V DC	Coil 12V DC	Spule 12V DC	Bobina 12V DC	Bobine 12V DC
25	1	3.024.02.038	Scheda led 12-24-220-400V	Board led 12-24V	Karte led 12-24V	Tarjeta led 12-24V	Carte led 12-24V
26	1	3.024.02.039	Scheda elettronica MCC124 (12V/24V)	Electronic Board MCC124 (12V/24V)	ElektronischeKarte MCC124 (12V/24V)	Tarjeta electrónico MCC124 (12V/24V)	Carte électronique MCC124 (12V/24V)
27	1	3.030.02.007	Livellostato	Leveller	Wasser Niveau	Nivelador	Niveleur
28	4	4.002.14.020	Vite M6x20 UNI5931	Screw M6x20 UNI5931	Schrauben M6x20 UNI5931	Tornillo M6x20 UNI5931	Vis M6x20 UNI5931
29	2	4.002.14.041	Vite M4x12 UNI5931	Screw M4x12 UNI5931	Schrauben M4x12 UNI5931	Tornillo M4x12 UNI5931	Vis M4x12 UNI5931
30	2	4.002.72.009	Vite TC M4x6	Screw TC M4x6	Schrauben TC M4x6	Tornillo TC M4x6	Vis TC M4x6
31	1	4.002.92.001	Vite autofilettante 3.5x19	Self-tapping Screw 3.5x19	Selbschneidendeschraube 3.5x19	Tornillo autoblocante 3.5x19	Vis autofiletant 3.5x19
32	2	4.002.94.005	Vite autofilettante 3.9x13	Self-tapping Screw 3.9x13	Gewindeschneidschraube 3.9x13	Tornillo Self-tapping 3.9x13	Vies Autofilettante 3.9x13
33	4	4.002.94.015	Vite autofilettante 3.9x9.5	Self-tapping Screw 3.9x9.5	Selbschneidendeschraube 3.9x9.5	Tornillo autoblocante 3.9x9.5	Vis autofiletant 3.9x9.5
34	5	4.005.22.009	OR 3024	O-ring 3024	O-ring 3024	OR 3024	Joint torique 3024
35	4	4.005.22.012	OR 2-105	O-ring 2-105	O-ring 2-105	OR 2-105	Joint torique 2-105
36	2	4.005.22.028	OR 0080-35	O-ring 0080-35	O-ring 0080-35	OR 0080-35	Joint torique ORM 0080-35
37	13	4.008.02.001	Rondella 6.4x11x1.6 DIN433 UNI6592 ZEB	Washer 6.4x11x1.6 DIN433 UNI6592 ZEB	Unterlegscheibe 6.4x11x1.6 DIN433 UNI6592 ZEB	Arandela 6.4x11x1.6 DIN433 UNI6592 ZEB	Rondelle 6.4x11x1.6 DIN433 UNI6592 ZEB
38	2	4.008.04.007	Rondella M4 UNI6593	Washer M4 UNI6593	Unterlegscheibe M4 UNI6593	Arandela M4 UNI6593	Rondelle M4 UNI6593
39	2	4.008.04.012	Rondella M10 10.5x18x2	Washer M10 10.5x18x2	Unterlegscheibe M10 10.5x18x2	Arandela M10 10.5x18x2	Rondelle M10 10.5x18x2
40	1	4.018.04.020	Interruttore	Switch	Schalter	Interruptor	Interrupteur
41	2	4.025.04.008	Seeger KS 6	Seeger KS 6	Seeger KS 6	Seeger KS 6	Seeger KS 6
42	1	4.031.04.003	Termostato 30°-150°	Thermostat 30°-150°	Thermostat 30°-150°	Termostato 30°-150°	Thermostat 30°-150°
43	1	4.033.04.042	Morsettiera	Terminal Block	Klemmleisten	Tableros de bornes	Plaques à bornes
44	1	4.033.04.043	Morsettiera	Terminal Block	Klemmleisten	Tableros de bornes	Plaques à bornes
45	1	4.033.04.044	Morsettiera	Terminal Block	Klemmleisten	Tableros de bornes	Plaques à bornes
46	1	4.033.04.045	Morsettiera	Terminal Block	Klemmleisten	Tableros de bornes	Plaques à bornes
47	1	4.035.02.019	Condensatore 1000mf 16X25 63V	Condenser 1000mf 16X25 63V	Kondensator 1000mf 16X25 63V	Condensador 1000mf 16X25 63V	Condenseur 1000mf 16X25 63V
48	1	4.042.07.002	Teleruttore	Remote control switch	Fernschalter	Telerruptor	Telerrupteur
49	1	4.053.04.005	Pulsante Reset (L=400mm) + Plug	Button Reset (L=400mm) + Plug	Drucktaste Reset (L=400mm) + Plug	Pulsante Reset (L=400mm) + Plug	Bouton Reset (L=400mm) + Plug
50	1	4.069.04.002	Sonda controllo fiamma	Flame control probe	Flamme-Sonde	Sensor de llama	sonde de contrôle de flamme
51	1	4.093.04.005	Morsettiera	Terminal Block	Klemmleisten	Tableros de bornes	Plaques à bornes
52	1	4.093.04.007	Terminale (di cavo)	Terminal	Schuh	Terminal	Boites d'extrémité
53	1	4.093.04.008	Terminale (di cavo)	Terminal	Schuh	Terminal	Boites d'extrémité

Preassembled Boiler 15L 250BAR

Premontato Caldaia 15L 250BAR

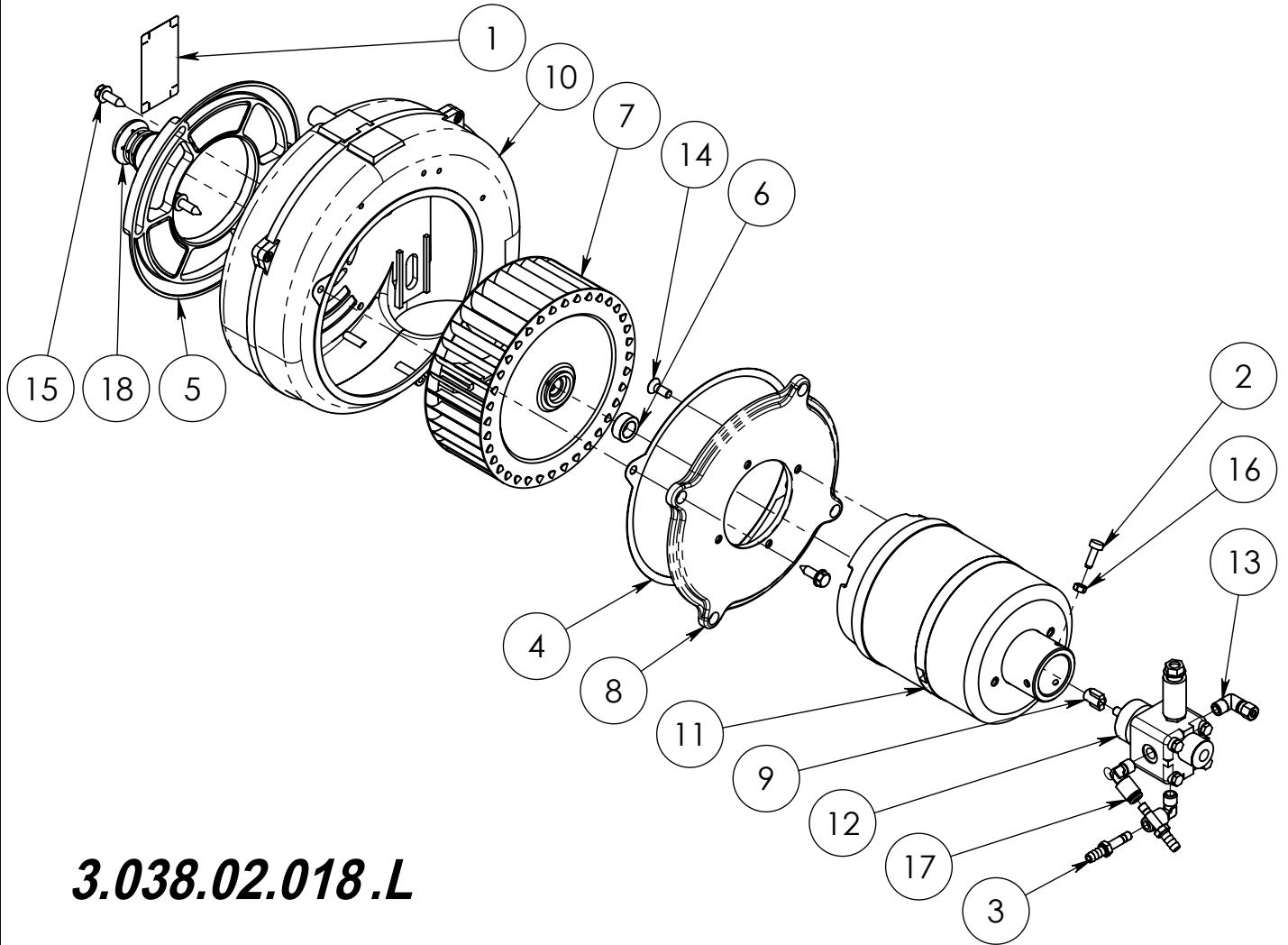


2.041.04.032.B

Pos.	Q.Ty	Code	ITALIANO	ENGLISH	DEUTSCH	ESPAÑOL	FRANCAIS
1	2	1.015.24.002	Ghiera 1/2"G	Ferrule 1/2"G	Zwinge 1/2"G	Abrazadera 1/2"G	Embout 1/2"G
2	1	1.054.04.006	Coperchio	Cover	Deckel	Tapa	Couvercle
3	1	1.056.04.019	Boccaglio ø75.4	Pipe union ø75.4	Stutzen ø75.4	Boca ø75.4	Mamelon ø75.4
4	1	1.094.04.005	Isolante termico 20-25L	Thermal insulator 20-25L	Waermeschutzstoff 20-25L	Aislador termal 20-25L	Isolateur thermique 20-25L
5	1	2.012.04.013	Coperchio W 20L	Cover W 20L	Deckel W 20L	Tapa W 20L	Couvercle W 20L
6	1	2.023.04.024	Camicia	Jacket	Mantel	Camisa	Chemise
7	1	2.029.04.014	Serpentina 15L	Coil 15L	Schlange 15L	Serpentin 15L	Serpentin 15L
8	1	2.056.04.001	Fascetta ø317	Clamp ø317	Klemme ø317	Faja ø317	Petit bande ø317
9	1	2.111.04.008	Camicia esterna	External jacket	Äusserer Mantel	Camisa externa	Chemise externe

Conveyor 12V 50Hz

Convogliatore 12V 50Hz

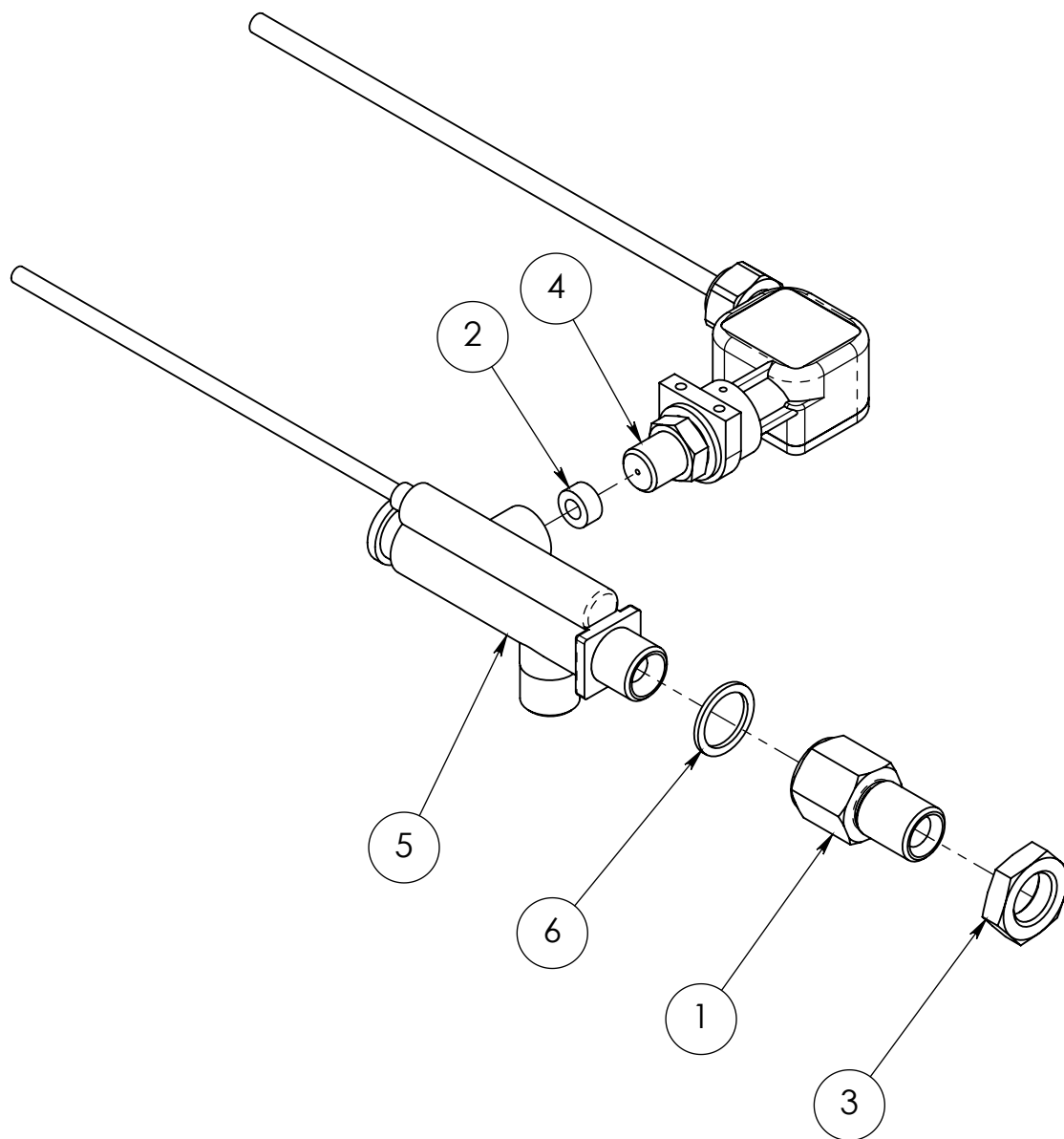


3.038.02.018.L

Pos.	Q.Ty	Code	ITALIANO	ENGLISH	DEUTSCH	ESPAÑOL	FRANCAIS
1	1	0.007.02.001	Etichetta 70x38	Label 70x38	Etikett 70x38	Etiqueta 70x38	Étiquette 70x38
2	3	1.004.04.001	Vite ø10 M5x20 (OT)	Screw ø10 M5x20 (OT)	Schrauben ø10 M5x20 (OT)	Tornillo ø10 M5x20 (OT)	Vis ø10 M5x20 (OT)
3	2	1.005.04.002	Innesto rapido	Quick coupling	Schnelle kupplung	Enchufe rapido	Raccord rapid
4	1	1.006.22.002	Guarnizione	Gasket	Dichtung	Guarnición	Garniture
5	1	1.009.02.003	Griglia controllo aria convogliatore	Grate for conveyor air check	Kontrollgitter Lüfterhaube	Rejilla de control aire transportador	Grille contrôle air convoyeur
6	1	1.060.02.011	Distanziale ø20	Spacer ø20	Distanzstueck ø20	Distanciador ø20	Entretoise ø20
7	1	1.073.04.011	Ventola ø160-ø12.7	Impeller ø160-ø12.7	Antreiber ø160-ø12.7	Impedor ø160-ø12.7	Roue à aubes ø160-ø12.7
8	1	1.074.02.045	Flangia	Flange	Flansch	Borde	Bride
9	1	1.098.02.001	Giunto DX	Coupling DX	Kupplung DX	Acoplamiento DX	Accouplement DX
10	1	2.017.22.003	Carter	Guard	Gehäuse	Cârtier	Carter
11	1	3.002.04.003	Motore Elettrico 12V DC 2300W 2800rpm	Electric Motor 12V DC 2300W 2800rpm	Elektromotor 12V DC 2300W 2800rpm	Motor Eléctrico 12V DC 2300W 2800rpm	Moteur électrique 12V DC 2300W 2800rpm
12	1	3.015.24.012	Pompa gasolio SP-9504316M/2	Diesel pump SP-9504316M/2	Heizölpumpe SP-9504316M/2	Bomba gasóleo SP-9504316M/2	Pompe gasoil SP-9504316M/2
13	1	3.050.14.001	Raccordo	Connection	Leiste	Filete	Filet
14	4	4.002.24.003	Vite M6x16 UNI5933	Screw M6x16 UNI5933	Schrauben M6x16 UNI5933	Tornillo M6x16 UNI5933	Vis M6x16 UNI5933
15	4	4.002.94.012	Vite autofilettante 6.3x20 AB 6950	Self-tapping Screw 6.3x20 AB 6950	Selbschneidendeschraube 6.3x20 AB 6950	Tornillo autoblocante 6.3x20 AB 6950	Vis autofiletant 6.3x20 AB 6950
16	3	4.009.02.001	Dado M5 UNI5588	Nut M5 UNI5588	Mutter M5 UNI5588	Dado M5 UNI5588	Ecrou M5 UNI5588
17	2	4.012.04.013	Raccordo a L G1/4	L Connection G1/4	Leiste L G1/4	Filete L G1/4	Filet L G1/4
18	1	4.036.02.002	Tappo ø32	Plug ø32	Deckel ø32	Tapón ø32	Bouchon ø32

Flow switch 250BAR

Flussostato 250BAR



2.086.02.003.C

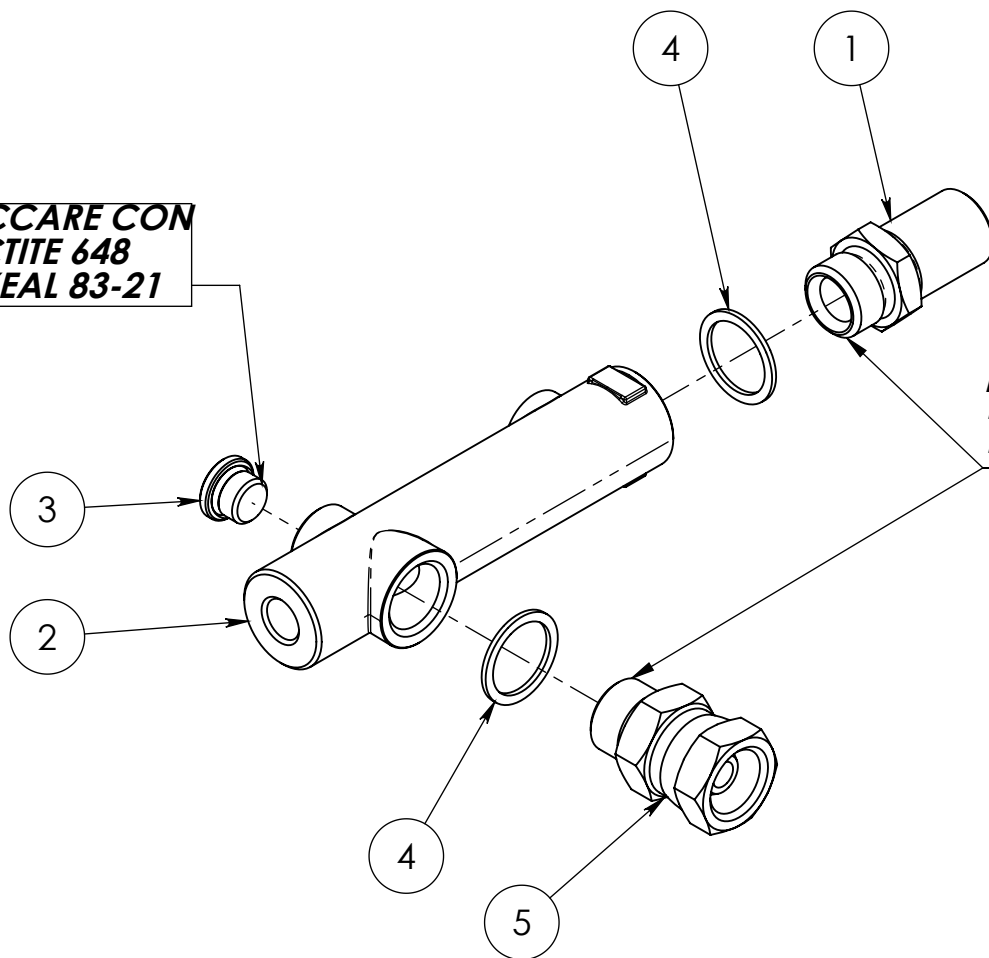
Pos.	Q.Ty	Code	ITALIANO	ENGLISH	DEUTSCH	ESPAÑOL	FRANCAIS
1	1	1.001.04.055	Raccordo 3/8"G M-F L42mm	Connection 3/8"G M-F L42mm	Leiste 3/8"G M-F L42mm	Filete 3/8"G M-F L42mm	Filet 3/8"G M-F L42mm
2	1	1.006.11.007	Guarnizione ø6xø11.8x6	Gasket ø6xø11.8x6	Dichtung ø6xø11.8x6	Guarnición ø6xø11.8x6	Garniture ø6xø11.8x6
3	1	1.015.04.012	Ghiera G3/8	Ferrule G3/8	Zwinge G3/8	Abrazadera G3/8	Embout G3/8
4	1	3.013.04.014	Pressostato 1/4 Pi15 A3 V250 - 1300mm	pressure gauge 1/4 Pi15 A3 V250 - 1300mm	Druckschalter 1/4 Pi15 A3 V250 - 1300mm	Presostato 1/4 Pi15 A3 V250 - 1300mm	Pressostat 1/4 Pi15 A3 V250 - 1300mm
5	1	3.054.04.002	Flussostato 3/8"G-MM 1/4"G-F 3A	Flow switch 3/8"G-MM 1/4"G-F 3A	Stromschalter 3/8"G-MM 1/4"G-F 3A	Flusostato 3/8"G-MM 1/4"G-F 3A	Flussostat 3/8"G-MM 1/4"G-F 3A
6	1	4.008.12.001	Rondella Rame G3/8	Copper washer G3/8	Kupferunterleggscheibe G3/8	Arandela de cobre G3/8	Rondelle cuivre G3/8

Collector 250BAR FIREBOX

Collettore 250BAR FIREBOX



**BLOCCARE CON
-LOCTITE 648
-LOXEAL 83-21**



**BLOCCARE CON
-LOCTITE 648
-LOXEAL 83-21**

2.048.04.018.F

Pos.	Q.Ty	Code	ITALIANO	ENGLISH	DEUTSCH	ESPAÑOL	FRANCAIS
1	1	1.001.04.030	Raccordo M22x1.5M-G1/2M	Connection M22x1.5M-G1/2M	Leiste M22x1.5M-G1/2M	Filete M22x1.5M-G1/2M	Filet M22x1.5M-G1/2M
2	1	1.042.24.005	Collettore WSF	Collector WSF	Kollektor WSF	Colector WSF	Collecteur WSF
3	1	2.013.02.004	Tappo 1/4G+OR	Cap 1/4G+OR	Deckel 1/4G+OR	Tapón 1/4G+OR	Bouchon 1/4G+OR
4	2	4.008.12.007	Rondella Rame G1/2	Copper washer G1/2	Kupferunterlegsscheibe G1/2	Arandelade cobre G1/2	Rondelle cuivre G1/2
5	1	4.012.04.003	Raccordo G1/2 MF	Connection G1/2 MF	Leiste G1/2 MF	Filete G1/2 MF	Filet G1/2 MF